

PDGF Receptor alpha antibody [7A3]

Cat. No. GTX34117

Host	Mouse
Clonality	Monoclonal
Isotype	IgG1
Applications	IHC-P
Reactivity	Human, Mouse, Rat

Package
100 µl

Applications

Application Note

*Optimal dilutions/concentrations should be determined by the researcher.

Suggested dilution	Recommended dilution
IHC-P	1:100-1:200

Not tested in other applications.

Properties

Form	Liquid
Buffer	PBS, 0.5% BSA, 50% Glycerol
Preservative	0.02% Sodium azide
Storage	Store as concentrated solution. Centrifuge briefly prior to opening vial. For short-term storage (1-2 weeks), store at 4°C. For long-term storage, aliquot and store at -20°C or below. Avoid multiple freeze-thaw cycles.
Concentration	1 mg/ml (Please refer to the vial label for the specific concentration.)
Immunogen	synthetic peptide derived from PDGFRalpha at 1010-1090 aa.
Purification	Purified by antigen-affinity chromatography
Conjugation	Unconjugated

Note

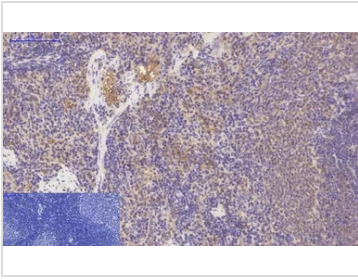
For laboratory research use only. Not for any clinical, therapeutic, or diagnostic use in humans or animals. Not for animal or human consumption.

Purchasers shall not, and agree not to enable third parties to, analyze, copy, reverse engineer or otherwise attempt to determine the structure or sequence of the product.



For full product information, images and publications, please visit our [website](#).

DATA IMAGES

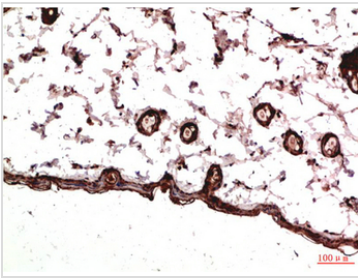


GTX34117 IHC-P Image

IHC-P analysis of rat spleen tissue using GTX34117 PDGF Receptor alpha antibody [7A3]. Negative control (the lower left coner) was secondary antibody only.

Antigen retrieval : Sodium citrate pH6.0 was used for antibody retrieval (>98°C, 20min)

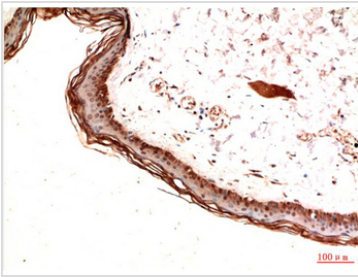
Dilution : 1:200



GTX34117 IHC-P Image

IHC-P analysis of rat skin tissue using GTX34117 PDGF Receptor alpha antibody [7A3].

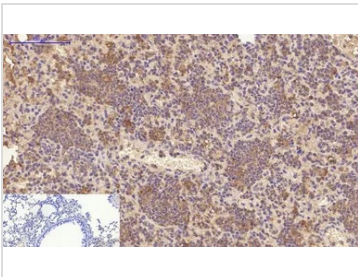
Dilution : 1:200



GTX34117 IHC-P Image

IHC-P analysis of human skin tissue using GTX34117 PDGF Receptor alpha antibody [7A3].

Dilution : 1:200



GTX34117 IHC-P Image

IHC-P analysis of mouse lung tissue using GTX34117 PDGF Receptor alpha antibody [7A3]. Negative control (the lower left coner) was secondary antibody only.

Antigen retrieval : Sodium citrate pH6.0 was used for antibody retrieval (>98°C, 20min)

Dilution : 1:200



For full product information, images and publications, please visit our [website](https://www.genetex.com).