

PI3 kinase p85 alpha antibody [3B7]

Cat. No. GTX34122

Host	Mouse
Clonality	Monoclonal
Isotype	IgG1
Applications	WB, IHC-P
Reactivity	Mouse, Rat

Package
100 µl

Applications

Application Note

*Optimal dilutions/concentrations should be determined by the researcher.

Suggested dilution	Recommended dilution
WB	1:1000-1:2000
IHC-P	1:100-1:200

Not tested in other applications.

Calculated MW 84 kDa. ([Note](#))

Properties

Form	Liquid
Buffer	PBS, 0.5% BSA, 50% Glycerol
Preservative	0.02% Sodium azide
Storage	Store as concentrated solution. Centrifuge briefly prior to opening vial. For short-term storage (1-2 weeks), store at 4°C. For long-term storage, aliquot and store at -20°C or below. Avoid multiple freeze-thaw cycles.
Concentration	1 mg/ml (Please refer to the vial label for the specific concentration.)
Immunogen	Recombinant Protein
Purification	Purified by antigen-affinity chromatography
Conjugation	Unconjugated

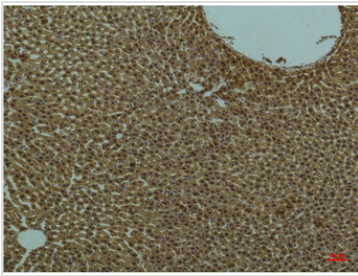
Note

For laboratory research use only. Not for any clinical, therapeutic, or diagnostic use in humans or animals. Not for animal or human consumption.

Purchasers shall not, and agree not to enable third parties to, analyze, copy, reverse engineer or otherwise attempt to determine the structure or sequence of the product.

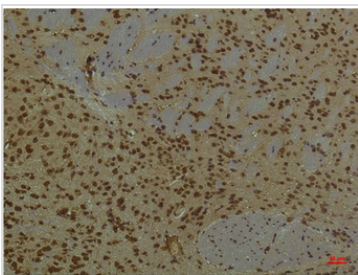


For full product information, images and publications, please visit our [website](#).

DATA IMAGES

GTX34122 IHC-P Image

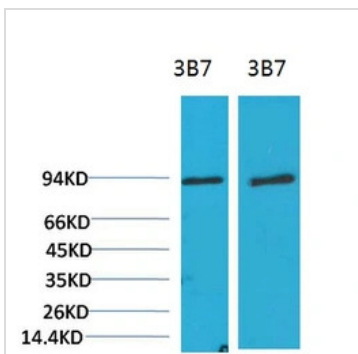
IHC-P analysis of rat liver tissue using GTX34122 PI3 kinase p85 alpha antibody [3B7].

Dilution : 1:200


GTX34122 IHC-P Image

IHC-P analysis of mouse brain tissue using GTX34122 PI3 kinase p85 alpha antibody [3B7].

Dilution : 1:200


GTX34122 WB Image

WB analysis of (1) 3T3, (2) rat liver tissue lysates using GTX34122 PI3 kinase p85 alpha antibody [3B7].

Dilution : 1:2000



For full product information, images and publications, please visit our [website](https://www.genetex.com).