

Cyclophilin B antibody [2B10]

Cat. No. GTX34135

Host	Mouse
Clonality	Monoclonal
Isotype	IgG1
Applications	WB, ICC/IF, IHC-P, IHC
Reactivity	Human, Mouse, Rat

Package
100 µl

Applications

Application Note

*Optimal dilutions/concentrations should be determined by the researcher.

Suggested dilution	Recommended dilution
WB	1:1000-1:2000
ICC/IF	Assay dependent
IHC-P	Assay dependent
IHC	Assay dependent

Not tested in other applications.

Calculated MW 24 kDa. ([Note](#))

Properties

Form	Liquid
Buffer	PBS, 0.5% BSA, 50% Glycerol
Preservative	0.02% Sodium azide
Storage	Store as concentrated solution. Centrifuge briefly prior to opening vial. For short-term storage (1-2 weeks), store at 4°C. For long-term storage, aliquot and store at -20°C or below. Avoid multiple freeze-thaw cycles.
Concentration	1 mg/ml (Please refer to the vial label for the specific concentration.)
Immunogen	Synthetic Peptide
Purification	Purified by antigen-affinity chromatography
Conjugation	Unconjugated

Note

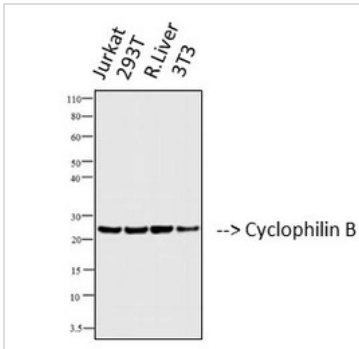
For laboratory research use only. Not for any clinical, therapeutic, or diagnostic use in humans or animals. Not for animal or human consumption.

Purchasers shall not, and agree not to enable third parties to, analyze, copy, reverse engineer or otherwise attempt to determine the structure or sequence of the product.



For full product information, images and publications, please visit our [website](#).

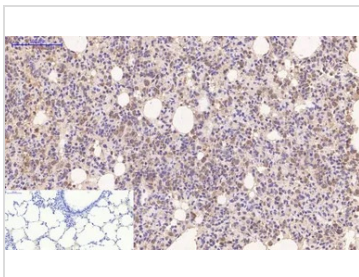
DATA IMAGES



GTX34135 WB Image

WB analysis of various sample lysates using GTX34135 Cyclophilin B antibody [2B10].

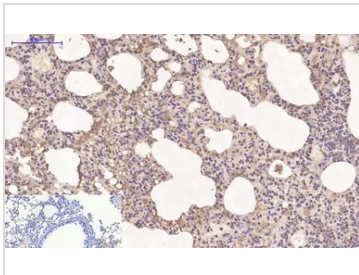
- Lane 1 : Jurkat cell lysate
- Lane 2 : 293T cell lysate
- Lane 3 : Rat Liver tissue lysate
- Lane 4 : 3T3 cell lysate



GTX34135 IHC-P Image

IHC-P analysis of rat lung tissue using GTX34135 Cyclophilin B antibody [2B10]. Negative control (the lower left coner) was secondary antibody only.

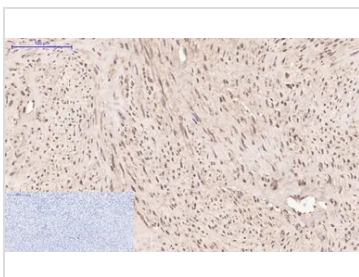
Antigen retrieval : Sodium citrate pH6.0 was used for antibody retrieval (>98°C, 20min)
Dilution : 1:200



GTX34135 IHC-P Image

IHC-P analysis of mouse lung tissue using GTX34135 Cyclophilin B antibody [2B10]. Negative control (the lower left coner) was secondary antibody only.

Antigen retrieval : Sodium citrate pH6.0 was used for antibody retrieval (>98°C, 20min)
Dilution : 1:200



GTX34135 IHC-P Image

IHC-P analysis of human uterus tissue using GTX34135 Cyclophilin B antibody [2B10]. Negative control (the lower left coner) was secondary antibody only.

Antigen retrieval : Sodium citrate pH6.0 was used for antibody retrieval (>98°C, 20min)
Dilution : 1:200



For full product information, images and publications, please visit our [website](#).