

Calpain 12 antibody

Cat. No. GTX34157

| | |
|---------------------|--------------|
| Host | Rabbit |
| Clonality | Polyclonal |
| Isotype | IgG |
| Applications | WB |
| Reactivity | Human, Mouse |

Package
100 µl

Applications

Application Note

*Optimal dilutions/concentrations should be determined by the researcher.

| Suggested dilution | Recommended dilution |
|--------------------|----------------------|
| WB | 1:500-1:2000 |

Not tested in other applications.

Calculated MW 81 kDa. ([Note](#))

Properties

| | |
|----------------------|--|
| Form | Liquid |
| Buffer | PBS, 0.5% BSA, 50% Glycerol |
| Preservative | 0.02% Sodium azide |
| Storage | Store as concentrated solution. Centrifuge briefly prior to opening vial. For short-term storage (1-2 weeks), store at 4°C. For long-term storage, aliquot and store at -20°C or below. Avoid multiple freeze-thaw cycles. |
| Concentration | 1 mg/ml (Please refer to the vial label for the specific concentration.) |
| Immunogen | Synthesized peptide derived from human Calpain 12 at 190-270 aa, Internal. |
| Purification | Purified by antigen-affinity chromatography From serum |
| Conjugation | Unconjugated |

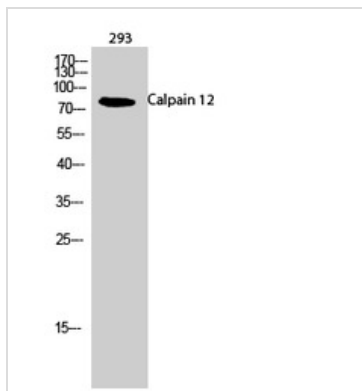
Note

For laboratory research use only. Not for any clinical, therapeutic, or diagnostic use in humans or animals. Not for animal or human consumption.

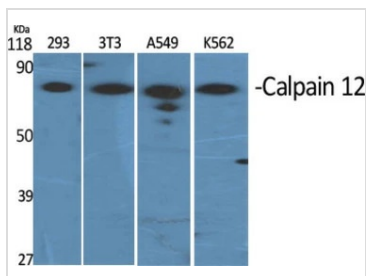
Purchasers shall not, and agree not to enable third parties to, analyze, copy, reverse engineer or otherwise attempt to determine the structure or sequence of the product.



For full product information, images and publications, please visit our [website](#).

DATA IMAGES

GTX34157 WB Image

WB analysis of 293 cell lysate using GTX34157 Calpain 12 antibody.


GTX34157 WB Image

WB analysis of various cell lysates using GTX34157 Calpain 12 antibody.

Lane 1 : 293T cell lysate

Lane 2 : 3T3 cell lysate

Lane 3 : A549 cell lysate

Lane 4 : K562 cell lysate



For full product information, images and publications, please visit our [website](https://www.genetex.com).