

Caspase 3 antibody [5H10]

Cat. No. GTX34166

Host	Mouse
Clonality	Monoclonal
Isotype	IgG1
Applications	IHC-P
Reactivity	Human, Mouse

Package
100 µl

Applications

Application Note

*Optimal dilutions/concentrations should be determined by the researcher.

Suggested dilution	Recommended dilution
IHC-P	1:100-1:200

Not tested in other applications.

Properties

Form	Liquid
Buffer	PBS, 0.5% BSA, 50% Glycerol
Preservative	0.02% Sodium azide
Storage	Store as concentrated solution. Centrifuge briefly prior to opening vial. For short-term storage (1-2 weeks), store at 4°C. For long-term storage, aliquot and store at -20°C or below. Avoid multiple freeze-thaw cycles.
Concentration	1 mg/ml (Please refer to the vial label for the specific concentration.)
Immunogen	synthetic peptide derived from Caspase-3 at 20-100 aa.
Purification	Purified by antigen-affinity chromatography
Conjugation	Unconjugated

Note

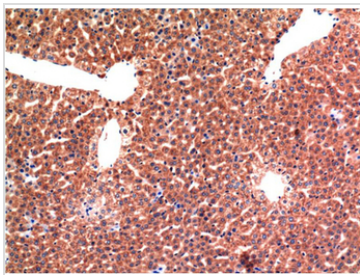
For laboratory research use only. Not for any clinical, therapeutic, or diagnostic use in humans or animals. Not for animal or human consumption.

Purchasers shall not, and agree not to enable third parties to, analyze, copy, reverse engineer or otherwise attempt to determine the structure or sequence of the product.



For full product information, images and publications, please visit our [website](#).

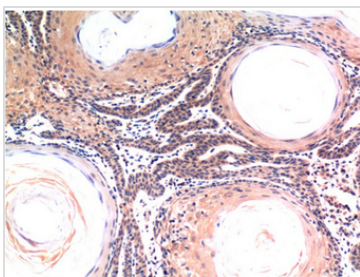
DATA IMAGES



GTX34166 IHC-P Image

IHC-P analysis of mouse liver tissue using GTX34166 Caspase 3 antibody [5H10].

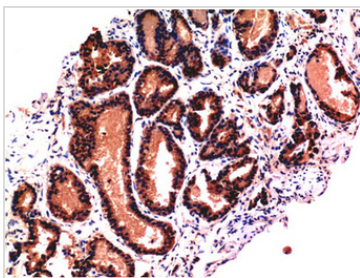
Dilution : 1:200



GTX34166 IHC-P Image

IHC-P analysis of human skin tissue using GTX34166 Caspase 3 antibody [5H10].

Dilution : 1:200



GTX34166 IHC-P Image

IHC-P analysis of human prostate tissue using GTX34166 Caspase 3 antibody [5H10].

Dilution : 1:200



For full product information, images and publications, please visit our [website](#).