

CD300e antibody

Cat. No. GTX34214

Host	Rabbit
Clonality	Polyclonal
Isotype	IgG
Applications	IHC-P
Reactivity	Human

Package
100 µl

Applications

Application Note

*Optimal dilutions/concentrations should be determined by the researcher.

Suggested dilution	Recommended dilution
IHC-P	1:50-1:300

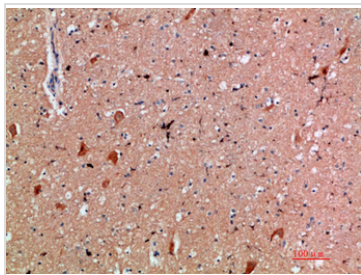
Not tested in other applications.

Properties

Form	Liquid
Buffer	PBS, 50% Glycerol
Preservative	0.02% Sodium azide
Storage	Store as concentrated solution. Centrifuge briefly prior to opening vial. For short-term storage (1-2 weeks), store at 4°C. For long-term storage, aliquot and store at -20°C or below. Avoid multiple freeze-thaw cycles.
Concentration	1 mg/ml (Please refer to the vial label for the specific concentration.)
Immunogen	Synthetic peptide from human CD300e protein at 31-80 aa.
Purification	Purified by antigen-affinity chromatography From serum
Conjugation	Unconjugated
Note	<p>For laboratory research use only. Not for any clinical, therapeutic, or diagnostic use in humans or animals. Not for animal or human consumption.</p> <p>Purchasers shall not, and agree not to enable third parties to, analyze, copy, reverse engineer or otherwise attempt to determine the structure or sequence of the product.</p>

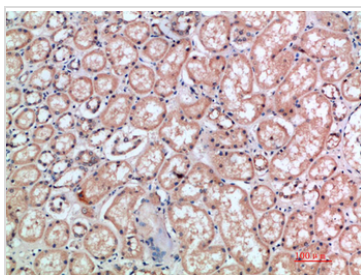


For full product information, images and publications, please visit our [website](#).

DATA IMAGES

GTX34214 IHC-P Image

IHC-P analysis of human brain tissue using GTX34214 CD300e antibody.

Dilution : 1:200


GTX34214 IHC-P Image

IHC-P analysis of human kidney tissue using GTX34214 CD300e antibody.

Dilution : 1:200



For full product information, images and publications, please visit our [website](https://www.genetex.com).