

STMN3 antibody

Cat. No. GTX34235

Host	Rabbit
Clonality	Polyclonal
Isotype	IgG
Applications	WB
Reactivity	Human

Package
100 µl

Applications

Application Note

*Optimal dilutions/concentrations should be determined by the researcher.

Suggested dilution	Recommended dilution
WB	1:500-1:2000
Not tested in other applications.	

Calculated MW 21 kDa. ([Note](#))

Properties

Form	Liquid
Buffer	PBS, 0.5% BSA, 50% Glycerol
Preservative	0.02% Sodium azide
Storage	Store as concentrated solution. Centrifuge briefly prior to opening vial. For short-term storage (1-2 weeks), store at 4°C. For long-term storage, aliquot and store at -20°C or below. Avoid multiple freeze-thaw cycles.
Concentration	1 mg/ml (Please refer to the vial label for the specific concentration.)
Immunogen	Synthesized peptide derived from human Stathmin-3 at 30-110 aa, Internal.
Purification	Purified by antigen-affinity chromatography From serum
Conjugation	Unconjugated

Note

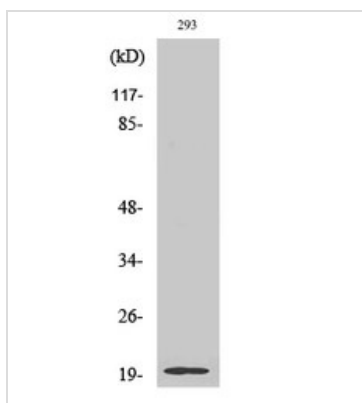
For laboratory research use only. Not for any clinical, therapeutic, or diagnostic use in humans or animals. Not for animal or human consumption.

Purchasers shall not, and agree not to enable third parties to, analyze, copy, reverse engineer or otherwise attempt to determine the structure or sequence of the product.



For full product information, images and publications, please visit our [website](#).

DATA IMAGES



GTX34235 WB Image

WB analysis of 293 cell lysate using GTX34235 STMN3 antibody.



For full product information, images and publications, please visit our [website](#).