

# beta Tubulin I antibody [5G3] (HRP)

**Cat. No. GTX34285**

<b>Host</b>	Mouse
<b>Clonality</b>	Monoclonal
<b>Isotype</b>	IgG1
<b>Application</b>	WB, IHC-P
<b>Reactivity</b>	Human, Mouse, Rat

**Package**  
100 µl

## APPLICATION

### Application Note

\*Optimal dilutions/concentrations should be determined by the researcher.

Suggested dilution	Recommended dilution
WB	1:1000-1:3000
IHC-P	1:50-1:200

Not tested in other applications.

**Calculated MW** 50 kDa. ( [Note](#) )

## PROPERTIES

<b>Form</b>	Liquid
<b>Buffer</b>	PBS, 0.5% BSA, 50% Glycerol
<b>Preservative</b>	0.02% Sodium azide
<b>Storage</b>	Store as concentrated solution. Centrifuge briefly prior to opening vial. For short-term storage (1-2 weeks), store at 4°C. For long-term storage, aliquot and store at -20°C or below. Avoid multiple freeze-thaw cycles.
<b>Concentration</b>	1 mg/ml (Please refer to the vial label for the specific concentration.)
<b>Immunogen</b>	recombinant Protein
<b>Purification</b>	Purified by antigen-affinity chromatography
<b>Conjugation</b>	Horseradish peroxidase(HRP)

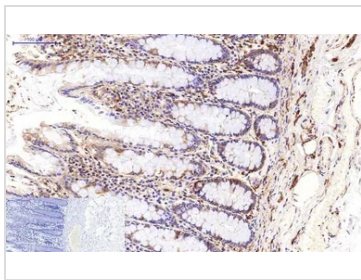
### Note

For laboratory research use only. Not for any clinical, therapeutic, or diagnostic use in humans or animals. Not for animal or human consumption.

Purchasers shall not, and agree not to enable third parties to, analyze, copy, reverse engineer or otherwise attempt to determine the structure or sequence of the product.



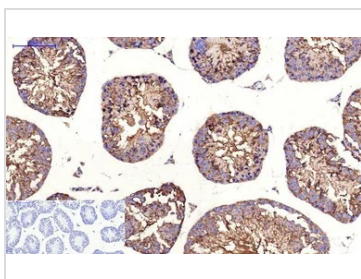
For full product information, images and publications, please visit our [website](#).

**DATA IMAGES**

**GTx34285 IHC-P Image**

IHC-P analysis of human colon tissue using GTx34285 beta Tubulin I antibody [5G3] (HRP). Negative control (the lower left coner) was secondary antibody only.

Antigen retrieval : Sodium citrate pH6.0 was used for antibody retrieval (>98°C, 20min)

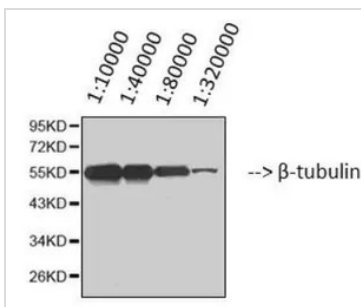
Dilution : 1:200


**GTx34285 IHC-P Image**

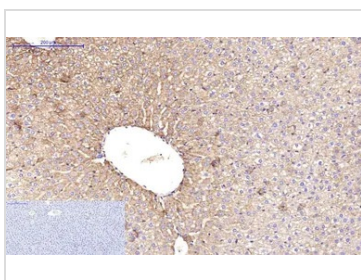
IHC-P analysis of mouse testis tissue using GTx34285 beta Tubulin I antibody [5G3] (HRP). Negative control (the lower left coner) was secondary antibody only.

Antigen retrieval : Sodium citrate pH6.0 was used for antibody retrieval (>98°C, 20min)

Dilution : 1:200


**GTx34285 WB Image**

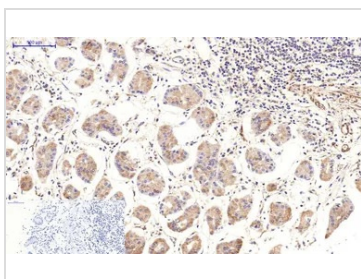
WB analysis of HeLa cell lysate using GTx34285 beta Tubulin I antibody [5G3] (HRP).


**GTx34285 IHC-P Image**

IHC-P analysis of rat liver tissue using GTx34285 beta Tubulin I antibody [5G3] (HRP). Negative control (the lower left coner) was secondary antibody only.

Antigen retrieval : Sodium citrate pH6.0 was used for antibody retrieval (>98°C, 20min)

Dilution : 1:200


**GTx34285 IHC-P Image**

IHC-P analysis of human stomach tissue using GTx34285 beta Tubulin I antibody [5G3] (HRP). Negative control (the lower left coner) was secondary antibody only.

Antigen retrieval : Sodium citrate pH6.0 was used for antibody retrieval (>98°C, 20min)

Dilution : 1:200



For full product information, images and publications, please visit our [website](https://www.genetex.com).