

## DLEU7 antibody

Cat. No. GTX34355

Host	Rabbit
Clonality	Polyclonal
Isotype	IgG
Applications	IHC-P
Reactivity	Human

Package  
100 µl

## Applications

## Application Note

\*Optimal dilutions/concentrations should be determined by the researcher.

Suggested dilution	Recommended dilution
IHC-P	1:50-1:300

Not tested in other applications.

## Properties

Form	Liquid
Buffer	PBS, 50% Glycerol
Preservative	0.02% Sodium azide
Storage	Store as concentrated solution. Centrifuge briefly prior to opening vial. For short-term storage (1-2 weeks), store at 4°C. For long-term storage, aliquot and store at -20°C or below. Avoid multiple freeze-thaw cycles.
Concentration	1 mg/ml (Please refer to the vial label for the specific concentration.)
Immunogen	Synthetic peptide from human DLEU7 protein at 51-100 aa.
Purification	Purified by antigen-affinity chromatography From serum
Conjugation	Unconjugated

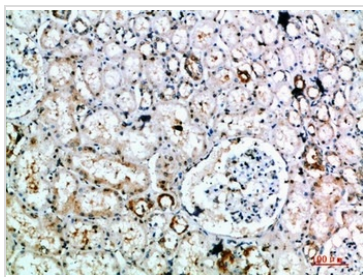
## Note

For laboratory research use only. Not for any clinical, therapeutic, or diagnostic use in humans or animals. Not for animal or human consumption.

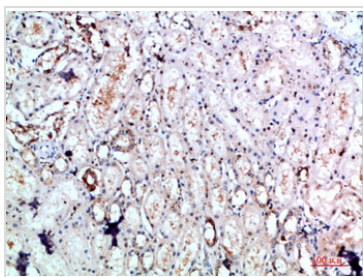
Purchasers shall not, and agree not to enable third parties to, analyze, copy, reverse engineer or otherwise attempt to determine the structure or sequence of the product.



For full product information, images and publications, please visit our [website](#).

**DATA IMAGES**

**GTX34355 IHC-P Image**

IHC-P analysis of human kidney tissue using GTX34355 DLEU7 antibody.  
Dilution : 1:200


**GTX34355 IHC-P Image**

IHC-P analysis of human kidney tissue using GTX34355 DLEU7 antibody.  
Dilution : 1:200



For full product information, images and publications, please visit our [website](https://www.genetex.com).