

ALDH1A1 antibody [ALDH1A1/1381]

Cat. No. GTX34400

Host	Mouse
Clonality	Monoclonal
Isotype	IgG1
Applications	WB, IHC-P
Reactivity	Human

Package
100 µg

Applications

Application Note

*Optimal dilutions/concentrations should be determined by the researcher.

Suggested dilution	Recommended dilution
WB	1-2µg/ml
IHC-P	1-2µg/ml for 30 min at RT

Note : Staining of formalin-fixed tissues requires heating tissue sections in 10mM Tris with 1mM EDTA, pH 9.0, for 45 min at 95°C followed by cooling at RT for 20 minutes.

Not tested in other applications.

Calculated MW 55 kDa. ([Note](#))

Properties

Form	Liquid
Buffer	PBS, 0.05% BSA
Preservative	0.05% Sodium azide
Storage	Store as concentrated solution. Centrifuge briefly prior to opening vial. For short-term storage (1-2 weeks), store at 4°C. For long-term storage, aliquot and store at -20°C or below. Avoid multiple freeze-thaw cycles.
Concentration	0.2 mg/ml (Please refer to the vial label for the specific concentration.)
Immunogen	Recombinant fragment (around aa 315-434) of human ALDH1A1 protein (exact sequence is proprietary).
Purification	Protein A/G purified
Conjugation	Unconjugated

Note

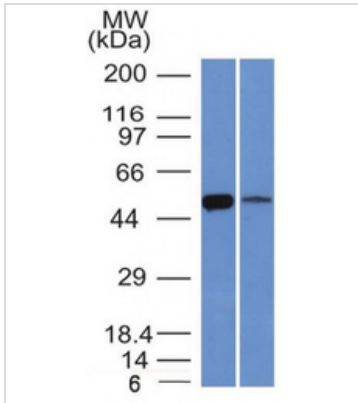
For laboratory research use only. Not for any clinical, therapeutic, or diagnostic use in humans or animals. Not for animal or human consumption.

Purchasers shall not, and agree not to enable third parties to, analyze, copy, reverse engineer or otherwise attempt to determine the structure or sequence of the product.



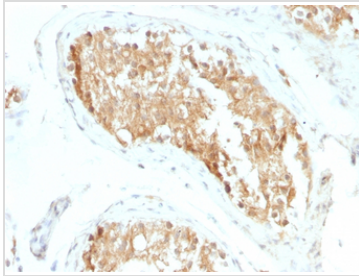
For full product information, images and publications, please visit our [website](#).

DATA IMAGES



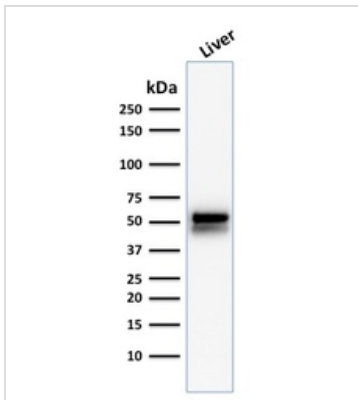
GTX34400 WB Image

WB analysis of K562 and lung lysates using GTX34400 ALDH1A1 antibody [ALDH1A1/1381].



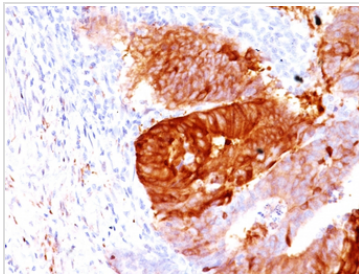
GTX34400 IHC-P Image

IHC-P analysis of human testicular carcinoma tissue using GTX34400 ALDH1A1 antibody [ALDH1A1/1381].



GTX34400 WB Image

WB analysis of human liver tissue lysate using GTX34400 ALDH1A1 antibody [ALDH1A1/1381].



GTX34400 IHC-P Image

IHC-P analysis of human colon carcinoma tissue using GTX34400 ALDH1A1 antibody [ALDH1A1/1381].



For full product information, images and publications, please visit our [website](https://www.genetex.com).