

Bcl-2 antibody [BCL2/796]

Cat. No. GTX34430

| | |
|--------------|------------|
| Host | Mouse |
| Clonality | Monoclonal |
| Isotype | IgG1 |
| Applications | WB, IHC-P |
| Reactivity | Human |

Package
100 µg

Applications

Application Note

*Optimal dilutions/concentrations should be determined by the researcher.

| Suggested dilution | Recommended dilution |
|--------------------|-------------------------------|
| WB | 1-2µg/ml |
| IHC-P | 1-2µg/ml for 30 minutes at RT |

Note : Staining of formalin-fixed tissues require heating tissue sections in 1mM EDTA, pH 7.5-8.5, for 45 min at 95°C followed by cooling at RT for 20 minutes.

Not tested in other applications.

| | |
|---------------|--|
| Calculated MW | 26 kDa. (Note) |
| Product Note | This antibody recognizes a protein of 25-26kDa, identified as the bcl-2 alpha oncoprotein. It shows no cross-reaction with Bcl-x or Bax protein. |

| Properties | |
|---------------|--|
| Form | Liquid |
| Buffer | PBS, 0.05% BSA |
| Preservative | 0.05% Sodium azide |
| Storage | Store as concentrated solution. Centrifuge briefly prior to opening vial. For short-term storage (1-2 weeks), store at 4°C. For long-term storage, aliquot and store at -20°C or below. Avoid multiple freeze-thaw cycles. |
| Concentration | 0.2 mg/ml (Please refer to the vial label for the specific concentration.) |
| Immunogen | Recombinant full-length human bcl-2 protein |
| Purification | Protein A/G purified |
| Conjugation | Unconjugated |



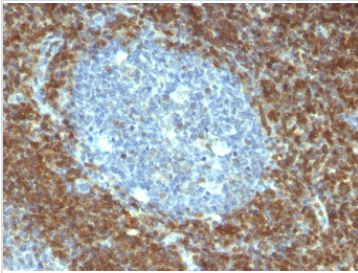
For full product information, images and publications, please visit our [website](#).

Date 2026 / 01 / 11 Page 1 of 2

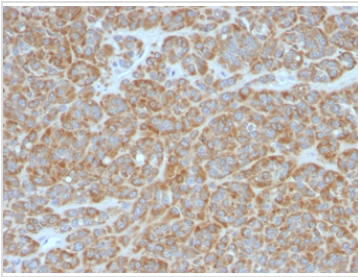
For laboratory research use only. Not for any clinical, therapeutic, or diagnostic use in humans or animals. Not for animal or human consumption.

Note

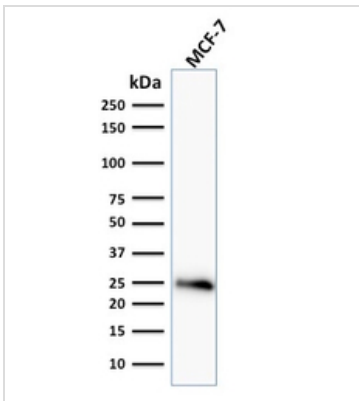
Purchasers shall not, and agree not to enable third parties to, analyze, copy, reverse engineer or otherwise attempt to determine the structure or sequence of the product.

DATA IMAGES

GTX34430 IHC-P Image

IHC-P analysis of human tonsil tissue using GTX34430 Bcl-2 antibody [BCL2/796].


GTX34430 IHC-P Image

IHC-P analysis of human melanoma tissue using GTX34430 Bcl-2 antibody [BCL2/796].


GTX34430 WB Image

WB analysis of MCF-7 cell lysate using GTX34430 Bcl-2 antibody [BCL2/796].



For full product information, images and publications, please visit our [website](#).