

## Bcl-2 antibody [124]

Cat. No. GTX34431

Host	Mouse
Clonality	Monoclonal
Isotype	IgG1
Application	WB, ICC/IF, IHC-P, FACS
Reactivity	Human

Package  
100 µg

## APPLICATION

## Application Note

\*Optimal dilutions/concentrations should be determined by the researcher.

Suggested dilution	Recommended dilution
WB	1-2µg/ml
ICC/IF	1-2µg/ml
IHC-P	1-2µg/ml for 30 minutes at RT
FACS	1-2µg/10 <sup>6</sup> cells

**Note : Staining of formalin-fixed tissues is enhanced by heating tissue sections in 10mM Tris buffer with 1mM EDTA, pH 9.0, for 45 min at 95°C followed by cooling at RT for 20 minutes.**

Not tested in other applications.

**Calculated MW** 26 kDa. ( [Note](#) )

## Product Note

This antibody recognizes a protein of 25-26kDa, identified as the bcl-2 alpha oncoprotein. It shows no cross-reaction with Bcl-x or Bax protein.  
We do not recommend use of this product for Mouse,Rat samples.

## PROPERTIES

Form	Liquid
Buffer	10mM PBS, 0.05% BSA
Preservative	0.05% Sodium azide
Storage	Store as concentrated solution. Centrifuge briefly prior to opening vial. For short-term storage (1-2 weeks), store at 4°C. For long-term storage, aliquot and store at -20°C or below. Avoid multiple freeze-thaw cycles.
Concentration	0.2 mg/ml (Please refer to the vial label for the specific concentration.)
Immunogen	A synthetic peptide, aa41-54 (GAAPAGIFSSQPG-Cys) of human Bcl-2 protein
Purification	Protein A/G purified



For full product information, images and publications, please visit our [website](#).

Date 2024 / 05 / 05 Page 1 of 2

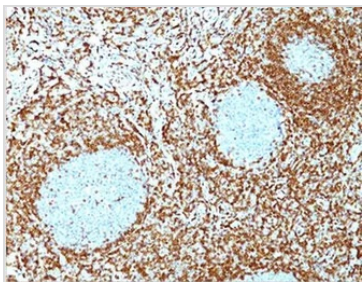
**Conjugation**

Unconjugated

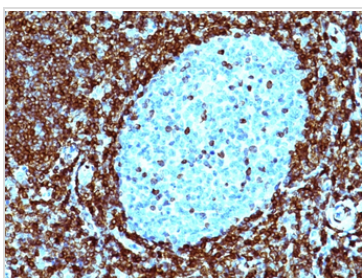
**Note**

For laboratory research use only. Not for any clinical, therapeutic, or diagnostic use in humans or animals. Not for animal or human consumption.

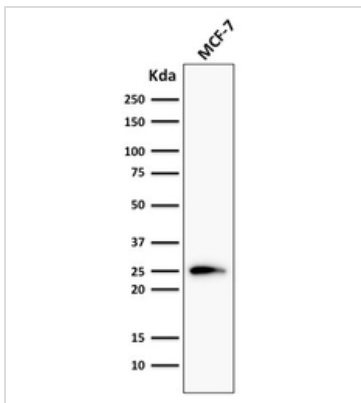
Purchasers shall not, and agree not to enable third parties to, analyze, copy, reverse engineer or otherwise attempt to determine the structure or sequence of the product.

**DATA IMAGES**

**GTx34431 IHC-P Image**

IHC-P analysis of human tonsil tissue using GTx34431 Bcl-2 antibody [124].


**GTx34431 IHC-P Image**

IHC-P analysis of human non-Hodgkin's lymphoma tissue using GTx34431 Bcl-2 antibody [124].


**GTx34431 WB Image**

WB analysis of MCF-7 cell lysate using GTx34431 Bcl-2 antibody [124].


 For full product information, images and publications, please visit our [website](https://www.genetex.com).