

beta 2 Microglobulin antibody [B2M/1118]

Cat. No. GTX34435

Host	Mouse
Clonality	Monoclonal
Isotype	IgG1
Applications	ICC/IF, IHC-P, FCM
Reactivity	Human, Primate

Package
100 µg

Applications

Application Note

*Optimal dilutions/concentrations should be determined by the researcher.

Suggested dilution	Recommended dilution
ICC/IF	1-2µg/ml
IHC-P	1-2µg/ml for 30 minutes at RT
FCM	1-2µg/10 ⁶ cells

Note : Staining of formalin-fixed tissues requires heating tissue sections in 10mM Tris with 1mM EDTA, pH 9.0, for 45 min at 95°C followed by cooling at RT for 20 minutes.

Not tested in other applications.

Properties

Form	Liquid
Buffer	PBS, 0.05% BSA
Preservative	0.05% Sodium azide
Storage	Store as concentrated solution. Centrifuge briefly prior to opening vial. For short-term storage (1-2 weeks), store at 4°C. For long-term storage, aliquot and store at -20°C or below. Avoid multiple freeze-thaw cycles.
Concentration	0.2 mg/ml (Please refer to the vial label for the specific concentration.)
Immunogen	Full length recombinant human B2M protein
Purification	Protein A/G purified
Conjugation	Unconjugated

Note

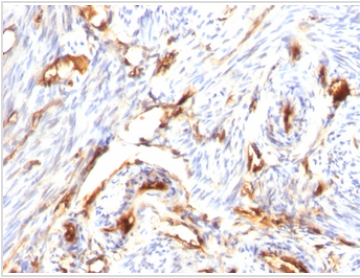
For laboratory research use only. Not for any clinical, therapeutic, or diagnostic use in humans or animals. Not for animal or human consumption.

Purchasers shall not, and agree not to enable third parties to, analyze, copy, reverse engineer or otherwise attempt to determine the structure or sequence of the product.

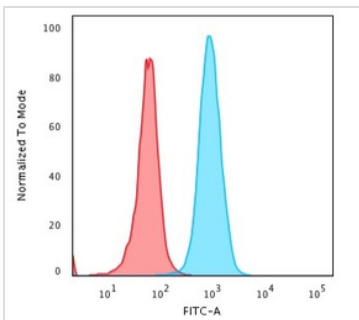


For full product information, images and publications, please visit our [website](#).

DATA IMAGES


GTX34435 IHC-P Image

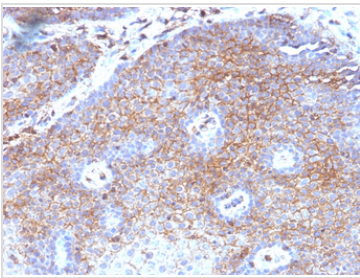
IHC-P analysis of human endometrial carcinoma tissue using GTX34435 beta 2 Microglobulin antibody [B2M/1118].


GTX34435 FCM Image

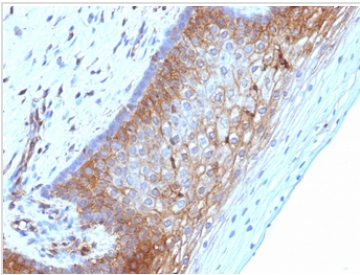
FACS analysis of HeLa cells using GTX34435 beta 2 Microglobulin antibody [B2M/1118].

Blue : Primary antibody

Red : Isotype control


GTX34435 IHC-P Image

IHC-P analysis of human cervical carcinoma tissue using GTX34435 beta 2 Microglobulin antibody [B2M/1118].


GTX34435 IHC-P Image

IHC-P analysis of human cervical ca tissue using GTX34435 beta 2 Microglobulin antibody [B2M/1118].



For full product information, images and publications, please visit our [website](#).