

CD105 antibody [ENG/1327]

Cat. No. GTX34454

| | |
|--------------|-----------------|
| Host | Mouse |
| Clonality | Monoclonal |
| Isotype | IgG1 |
| Applications | WB, ICC/IF, FCM |
| Reactivity | Human |

Package
100 µg

Applications

Application Note

*Optimal dilutions/concentrations should be determined by the researcher.

| Suggested dilution | Recommended dilution |
|--------------------|--|
| WB | 1-2µg/ml for 60 minutes at RT |
| ICC/IF | 1-2µg/ml |
| FCM | 0.5-1µg/10 ⁶ cells in 0.1ml |

Not tested in other applications.

Calculated MW 0/71 kDa. ([Note](#))

Properties

| | |
|---------------|--|
| Form | Liquid |
| Buffer | PBS, 0.05% BSA |
| Preservative | 0.05% Sodium azide |
| Storage | Store as concentrated solution. Centrifuge briefly prior to opening vial. For short-term storage (1-2 weeks), store at 4°C. For long-term storage, aliquot and store at -20°C or below. Avoid multiple freeze-thaw cycles. |
| Concentration | 0.2 mg/ml (Please refer to the vial label for the specific concentration.) |
| Immunogen | Recombinant human Endoglin protein fragment (aa74-251) (exact sequence is proprietary) |
| Purification | Protein A/G purified |
| Conjugation | Unconjugated |

Note

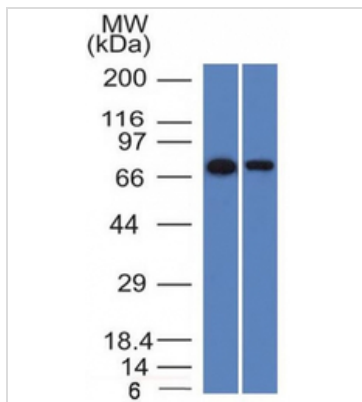
For laboratory research use only. Not for any clinical, therapeutic, or diagnostic use in humans or animals. Not for animal or human consumption.

Purchasers shall not, and agree not to enable third parties to, analyze, copy, reverse engineer or otherwise attempt to determine the structure or sequence of the product.



For full product information, images and publications, please visit our [website](#).

DATA IMAGES



GTX34454 WB Image

WB analysis of HeLa and A431 cell lysates using GTX34454 CD105 antibody [ENG/1327].



For full product information, images and publications, please visit our [website](#).