

CD147 antibody [8D6]

Cat. No. GTX34462

Host	Mouse
Clonality	Monoclonal
Isotype	IgG1
Applications	ICC/IF, IHC-P, FCM, Neutralizing/Inhibition
Reactivity	Human

Package
100 µg

Applications

Application Note

*Optimal dilutions/concentrations should be determined by the researcher.

Suggested dilution	Recommended dilution
ICC/IF	1:100-1:200
IHC-P	1-2µg/ml for 30 minutes at RT
FCM	1-2µg/10 ⁶ cells
Neutralizing/Inhibition	Assay dependent

Note : Staining of formalin-fixed tissues requires heating tissue sections in 10mM Tris with 1mM EDTA, pH 9.0, for 45 min at 95°C followed by cooling at RT for 20 minutes.

Inhibits Homotypic Aggregation, Adhesion to Matrix Proteins, and Migration through Matrigel. For functional assay, please contact us to order PBS only format.

Not tested in other applications.

Product Note This MAb recognizes extracellular epitope 2 within the N-terminal Ig domain of human CD147.

Properties

Form	Liquid
Buffer	PBS, 0.05% BSA
Preservative	0.05% Sodium azide
Storage	Store as concentrated solution. Centrifuge briefly prior to opening vial. For short-term storage (1-2 weeks), store at 4°C. For long-term storage, aliquot and store at -20°C or below. Avoid multiple freeze-thaw cycles.
Concentration	0.2 mg/ml (Please refer to the vial label for the specific concentration.)
Immunogen	Human T cell line Molt 13
Purification	Protein A/G purified
Conjugation	Unconjugated

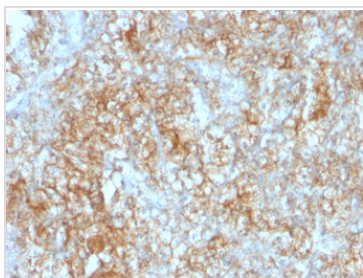


For full product information, images and publications, please visit our [website](#).

Note

For laboratory research use only. Not for any clinical, therapeutic, or diagnostic use in humans or animals. Not for animal or human consumption.

Purchasers shall not, and agree not to enable third parties to, analyze, copy, reverse engineer or otherwise attempt to determine the structure or sequence of the product.

DATA IMAGES

GTX34462 IHC-P Image

IHC-P analysis of human renal cell carcinoma tissue using GTX34462 CD147 antibody [8D6].



For full product information, images and publications, please visit our [website](#).