

SSEA-1 / CD15 antibody [SPM490]

Cat. No. GTX34465

Host	Mouse
Clonality	Monoclonal
Isotype	IgM
Application	ICC/IF, IHC-P
Reactivity	Human

Package
100 µg

APPLICATION

Application Note

*Optimal dilutions/concentrations should be determined by the researcher.

Suggested dilution	Recommended dilution
ICC/IF	1-2µg/ml
IHC-P	1-2µg/ml for 30 minutes at RT

Not tested in other applications.

PROPERTIES

Form	Liquid
Buffer	10mM PBS, 0.05% BSA
Preservative	0.05% Sodium azide
Storage	Store as concentrated solution. Centrifuge briefly prior to opening vial. For short-term storage (1-2 weeks), store at 4°C. For long-term storage, aliquot and store at -20°C or below. Avoid multiple freeze-thaw cycles.
Concentration	0.2 mg/ml (Please refer to the vial label for the specific concentration.)
Immunogen	Myelomonocytic leukemia cells
Purification	Purified IgM
Conjugation	Unconjugated

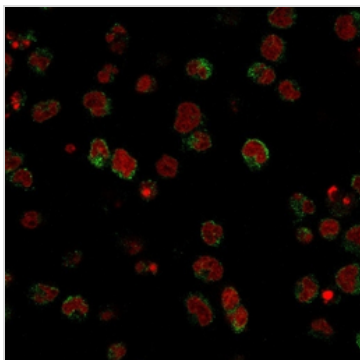
Note

For laboratory research use only. Not for any clinical, therapeutic, or diagnostic use in humans or animals. Not for animal or human consumption.

Purchasers shall not, and agree not to enable third parties to, analyze, copy, reverse engineer or otherwise attempt to determine the structure or sequence of the product.



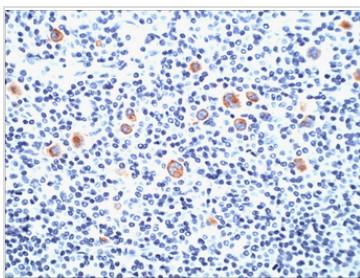
For full product information, images and publications, please visit our [website](#).

DATA IMAGES

GTX34465 ICC/IF Image

ICC/IF analysis of U937 cells using GTX34465 SSEA-1 / CD15 antibody [SPM490].

Green : Primary antibody

Red : nucleus


GTX34465 IHC-P Image

IHC-P analysis of human Hodgkin's lymphoma tissue using GTX34465 SSEA-1 / CD15 antibody [SPM490].



For full product information, images and publications, please visit our [website](#).