

# SSEA-1 / CD15 antibody [FUT4/1478R]

**Cat. No. GTX34467**

<b>Host</b>	Rabbit
<b>Clonality</b>	Monoclonal
<b>Isotype</b>	IgG
<b>Applications</b>	ICC/IF, IHC-P, FCM
<b>Reactivity</b>	Human, Mouse, Rat

References ( 1 )

Package

100 µg

## Applications

### Application Note

\*Optimal dilutions/concentrations should be determined by the researcher.

Suggested dilution	Recommended dilution
ICC/IF	1-2µg/ml
IHC-P	1-2µg/ml for 30 minutes at RT
FCM	1-2µg/10 <sup>6</sup> cells

**Note : Staining of formalin-fixed tissues require heating tissue sections in 1mM EDTA, pH 8.0, for 45 min at 95°C followed by cooling at RT for 20 minutes.**

Not tested in other applications.

## Properties

<b>Form</b>	Liquid
<b>Buffer</b>	PBS, 0.05% BSA
<b>Preservative</b>	0.05% Sodium azide
<b>Storage</b>	Store as concentrated solution. Centrifuge briefly prior to opening vial. For short-term storage (1-2 weeks), store at 4°C. For long-term storage, aliquot and store at -20°C or below. Avoid multiple freeze-thaw cycles.
<b>Concentration</b>	0.2 mg/ml (Please refer to the vial label for the specific concentration.)
<b>Immunogen</b>	Recombinant human full-length CD15 protein
<b>Purification</b>	Protein A purified
<b>Conjugation</b>	Unconjugated

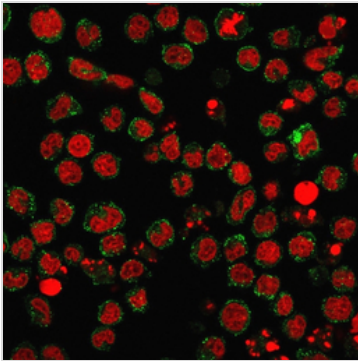
### Note

For laboratory research use only. Not for any clinical, therapeutic, or diagnostic use in humans or animals. Not for animal or human consumption.

Purchasers shall not, and agree not to enable third parties to, analyze, copy, reverse engineer or otherwise attempt to determine the structure or sequence of the product.



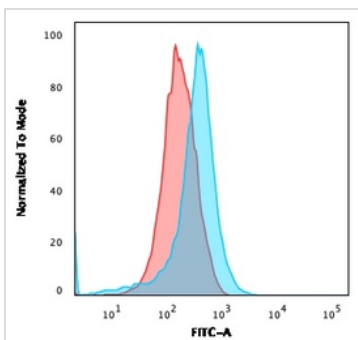
For full product information, images and publications, please visit our [website](#).

**DATA IMAGES**

**GTX34467 ICC/IF Image**

ICC/IF analysis of U937 cells using GTX34467 SSEA-1 / CD15 antibody [FUT4/1478R].

Green : Primary antibody

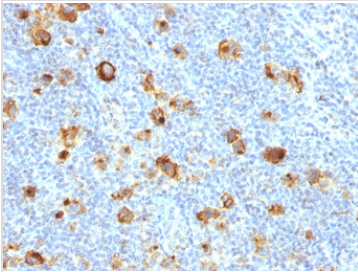
Red : nucleus


**GTX34467 FCM Image**

FACS analysis of U937 cells using GTX34467 SSEA-1 / CD15 antibody [FUT4/1478R].

Blue : Primary antibody

Red : Isotype control


**GTX34467 IHC-P Image**

IHC-P analysis of human Hodgkin's lymphoma tissue using GTX34467 SSEA-1 / CD15 antibody [FUT4/1478R].



For full product information, images and publications, please visit our [website](https://www.genetex.com).