

CD20 antibody [rIGEL/773]

Cat. No. GTX34476

| | |
|---------------------|--------------------|
| Host | Mouse |
| Clonality | Monoclonal |
| Isotype | IgG1 |
| Applications | ICC/IF, IHC-P, FCM |
| Reactivity | Human |

Package
100 µg

Applications

Application Note

*Optimal dilutions/concentrations should be determined by the researcher.

| Suggested dilution | Recommended dilution |
|--------------------|-------------------------------|
| ICC/IF | 1-2µg/ml |
| IHC-P | 1-2µg/ml for 30 minutes at RT |
| FCM | 1-2µg/10 ⁶ cells |

Note : Staining of formalin-fixed tissues requires heating tissue sections in 10mM Tris with 1mM EDTA, pH 9.0, for 45 min at 95°C followed by cooling at RT for 20 minutes.

Not tested in other applications.

Properties

| | |
|----------------------|--|
| Form | Liquid |
| Buffer | PBS, 0.05% BSA |
| Preservative | 0.05% Sodium azide |
| Storage | Store as concentrated solution. Centrifuge briefly prior to opening vial. For short-term storage (1-2 weeks), store at 4°C. For long-term storage, aliquot and store at -20°C or below. Avoid multiple freeze-thaw cycles. |
| Concentration | 0.2 mg/ml (Please refer to the vial label for the specific concentration.) |
| Immunogen | Recombinant full-length human MS4A1 fragment |
| Purification | Protein A/G purified |
| Conjugation | Unconjugated |

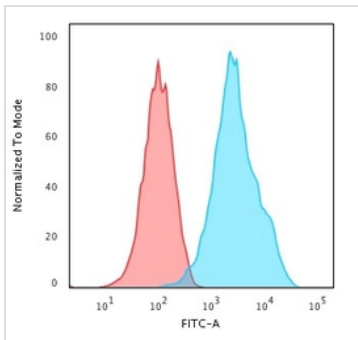
Note

For laboratory research use only. Not for any clinical, therapeutic, or diagnostic use in humans or animals. Not for animal or human consumption.

Purchasers shall not, and agree not to enable third parties to, analyze, copy, reverse engineer or otherwise attempt to determine the structure or sequence of the product.



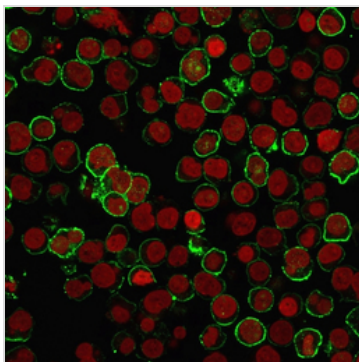
For full product information, images and publications, please visit our [website](#).

DATA IMAGES

GTX34476 FCM Image

FACS analysis of Raji cells using GTX34476 CD20 antibody [rIGEL/773].

Blue : Primary antibody

Red : Isotype control


GTX34476 ICC/IF Image

ICC/IF analysis of Raji cells using GTX34476 CD20 antibody [rIGEL/773].

Green : Primary antibody

Red : nucleus



For full product information, images and publications, please visit our [website](https://www.genetex.com).