

CD3 epsilon antibody [PC3/188A]

Cat. No. GTX34480

Host	Mouse
Clonality	Monoclonal
Isotype	IgG1
Applications	WB, ICC/IF, IHC-P, FCM
Reactivity	Human, Rat, Rabbit, Bovine, Chicken, Guinea pig, Pig, Horse

Package
100 µg

Applications

Application Note

*Optimal dilutions/concentrations should be determined by the researcher.

Suggested dilution	Recommended dilution
WB	1-2µg/ml for 60 minutes at RT
ICC/IF	1-2µg/ml
IHC-P	Assay dependent
FCM	1-2µg/10 ⁶ cells

Not tested in other applications.

Calculated MW 23 kDa. ([Note](#))

Properties

Form	Liquid
Buffer	PBS, 0.05% BSA
Preservative	0.05% Sodium azide
Storage	Store as concentrated solution. Centrifuge briefly prior to opening vial. For short-term storage (1-2 weeks), store at 4°C. For long-term storage, aliquot and store at -20°C or below. Avoid multiple freeze-thaw cycles.
Concentration	0.2 mg/ml (Please refer to the vial label for the specific concentration.)
Immunogen	A synthetic peptide corresponding to amino acids 156-168 of the cytoplasmic domain of human CD3-ε chain
Purification	Protein A/G purified
Conjugation	Unconjugated

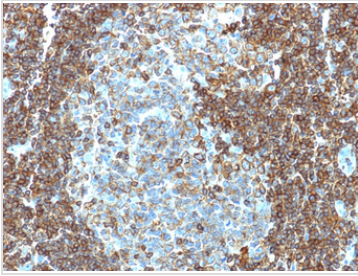
Note

For laboratory research use only. Not for any clinical, therapeutic, or diagnostic use in humans or animals. Not for animal or human consumption.

Purchasers shall not, and agree not to enable third parties to, analyze, copy, reverse engineer or otherwise attempt to determine the structure or sequence of the product.

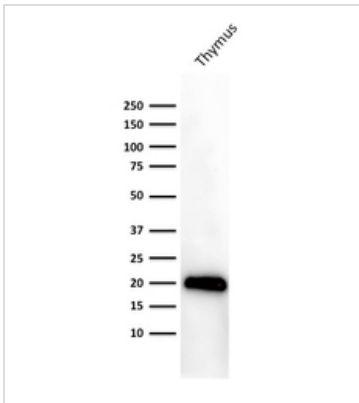
For full product information, images and publications, please visit our [website](#).

DATA IMAGES



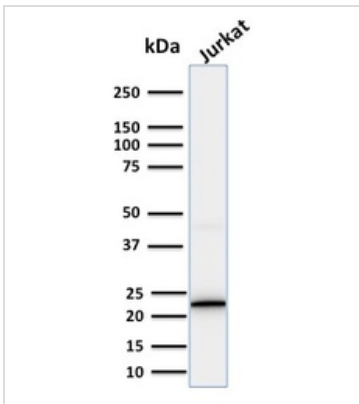
GTX34480 IHC-P Image

IHC-P analysis of human tonsil tissue using GTX34480 CD3 epsilon antibody [PC3/188A].



GTX34480 WB Image

WB analysis of human thymus tissue lysate using GTX34480 CD3 epsilon antibody [PC3/188A].



GTX34480 WB Image

WB analysis of Jurkat cell lysate using GTX34480 CD3 epsilon antibody [PC3/188A].



For full product information, images and publications, please visit our [website](#).