

## CD3 epsilon antibody [C3e/1308]

Cat. No. GTX34481

Host	Mouse
Clonality	Monoclonal
Isotype	IgG2b
Applications	WB, FCM
Reactivity	Human

**Package**  
100 µg

## Applications

## Application Note

\*Optimal dilutions/concentrations should be determined by the researcher.

Suggested dilution	Recommended dilution
WB	1-2µg/ml for 60 minutes at RT
FCM	1-2µg/10 <sup>6</sup> cells

Not tested in other applications.

**Calculated MW** 23 kDa. ( [Note](#) )

## Properties

Form	Liquid
Buffer	PBS, 0.05% BSA
Preservative	0.05% Sodium azide
Storage	Store as concentrated solution. Centrifuge briefly prior to opening vial. For short-term storage (1-2 weeks), store at 4°C. For long-term storage, aliquot and store at -20°C or below. Avoid multiple freeze-thaw cycles.
Concentration	0.2 mg/ml (Please refer to the vial label for the specific concentration.)
Immunogen	Recombinant human CD3e fragment (aa 23-119)
Purification	Protein A/G purified
Conjugation	Unconjugated

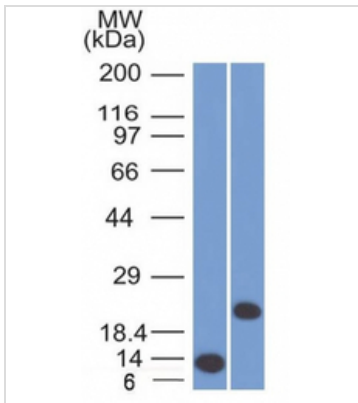
## Note

For laboratory research use only. Not for any clinical, therapeutic, or diagnostic use in humans or animals. Not for animal or human consumption.

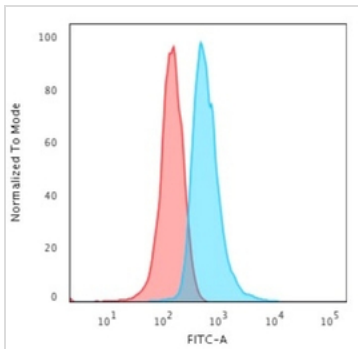
Purchasers shall not, and agree not to enable third parties to, analyze, copy, reverse engineer or otherwise attempt to determine the structure or sequence of the product.



For full product information, images and publications, please visit our [website](#).

**DATA IMAGES**

**GTX34481 WB Image**

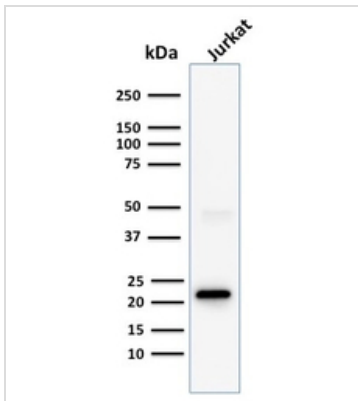
WB analysis of recombinant CD3e protein and Jurkat cell lysates using GTX34481 CD3 epsilon antibody [C3e/1308].


**GTX34481 FCM Image**

FACS analysis of Jurkat cells using GTX34481 CD3 epsilon antibody [C3e/1308].

Blue : Primary antibody

Red : Isotype control


**GTX34481 WB Image**

WB analysis of Jurkat cell lysate using GTX34481 CD3 epsilon antibody [C3e/1308].



For full product information, images and publications, please visit our [website](#).