

CD43 antibody [Bra7G]

Cat. No. GTX34510

Host	Mouse
Clonality	Monoclonal
Isotype	IgM
Applications	ICC/IF, IHC-P, FCM
Reactivity	Human

Package
100 µg

Applications

Application Note

*Optimal dilutions/concentrations should be determined by the researcher.

Suggested dilution	Recommended dilution
ICC/IF	1-2µg/ml
IHC-P	1-2µg/ml for 30 minutes at RT
FCM	1-2µg/10 ⁶ cells

Not tested in other applications.

Product Note Epitope of MAb Bra7G is clearly different from that of MAb DF-T1, called b as opposed to a for DF-T1.

Properties

Form	Liquid
Buffer	PBS, 0.05% BSA
Preservative	0.05% Sodium azide
Storage	Store as concentrated solution. Centrifuge briefly prior to opening vial. For short-term storage (1-2 weeks), store at 4°C. For long-term storage, aliquot and store at -20°C or below. Avoid multiple freeze-thaw cycles.
Concentration	0.2 mg/ml (Please refer to the vial label for the specific concentration.)
Immunogen	Immature pluripotent human leukemia K562 cells
Purification	PEG precipitation
Conjugation	Unconjugated

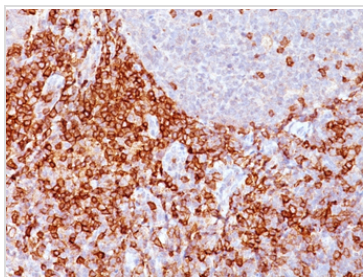
Note

For laboratory research use only. Not for any clinical, therapeutic, or diagnostic use in humans or animals. Not for animal or human consumption.

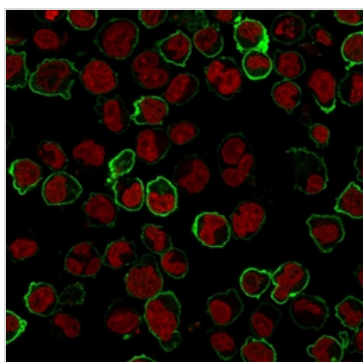
Purchasers shall not, and agree not to enable third parties to, analyze, copy, reverse engineer or otherwise attempt to determine the structure or sequence of the product.



For full product information, images and publications, please visit our [website](#).

DATA IMAGES

GTX34510 IHC-P Image

IHC-P analysis of human spleen tissue using GTX34510 CD43 antibody [Bra7G].


GTX34510 ICC/IF Image

ICC/IF analysis of K562 cells using GTX34510 CD43 antibody [Bra7G].

Green : Primary antibody

Red : nucleus



For full product information, images and publications, please visit our [website](#).