

CD43 antibody [DF-T1]

Cat. No. GTX34513

Host	Mouse
Clonality	Monoclonal
Isotype	IgG1
Applications	WB, ICC/IF, IHC-P, FCM
Reactivity	Human

Package
100 µg

Applications

Application Note

*Optimal dilutions/concentrations should be determined by the researcher.

Suggested dilution	Recommended dilution
WB	1-2µg/ml
ICC/IF	1-2µg/ml
IHC-P	1-2µg/ml for 30 minutes at RT
FCM	1-2µg/10 ⁶ cells

Note : Staining of formalin-fixed tissues requires heating tissue sections in 10mM Tris with 1mM EDTA, pH 9.0, for 45 min at 95°C followed by cooling at RT for 20 minutes.

Not tested in other applications.

Calculated MW 40 kDa. ([Note](#))

Product Note Epitope of MAb Bra7G is clearly different from that of MAb DF-T1, called b as opposed to a for DF-T1.

Properties

Form	Liquid
Buffer	PBS, 0.05% BSA
Preservative	0.05% Sodium azide
Storage	Store as concentrated solution. Centrifuge briefly prior to opening vial. For short-term storage (1-2 weeks), store at 4°C. For long-term storage, aliquot and store at -20°C or below. Avoid multiple freeze-thaw cycles.
Concentration	0.2 mg/ml (Please refer to the vial label for the specific concentration.)
Immunogen	Myeloblastic KG1 cells
Purification	Protein A/G purified
Conjugation	Unconjugated



For full product information, images and publications, please visit our [website](#).

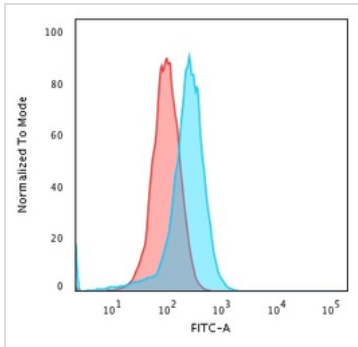
Date 2026 / 01 / 05 Page 1 of 2

For laboratory research use only. Not for any clinical, therapeutic, or diagnostic use in humans or animals. Not for animal or human consumption.

Note

Purchasers shall not, and agree not to enable third parties to, analyze, copy, reverse engineer or otherwise attempt to determine the structure or sequence of the product.

DATA IMAGES

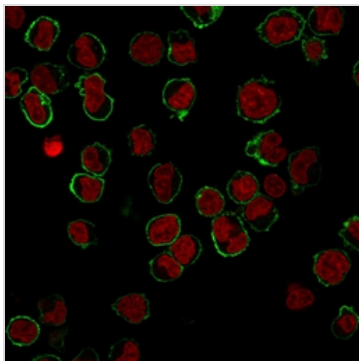


GTX34513 FCM Image

FACS analysis of PFA-fixed K562 cells using GTX34513 CD43 antibody [DF-T1].

Blue : Primary antibody

Red : Isotype control

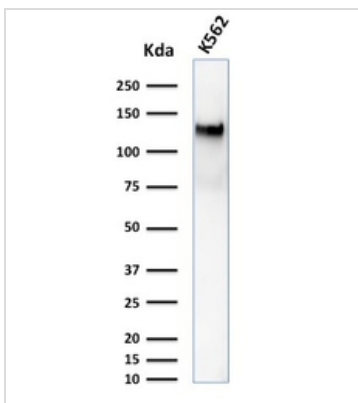


GTX34513 ICC/IF Image

ICC/IF analysis of K562 cells using GTX34513 CD43 antibody [DF-T1].

Green : Primary antibody

Red : nucleus



GTX34513 WB Image

WB analysis of K562 cell lysate using GTX34513 CD43 antibody [DF-T1].



For full product information, images and publications, please visit our [website](https://www.genetex.com).