

## CD44v4 antibody [CD44v4/1219]

Cat. No. GTX34520

Host	Mouse
Clonality	Monoclonal
Isotype	IgG2a
Applications	IHC-P
Reactivity	Human

Package  
100 µg

## Applications

## Application Note

\*Optimal dilutions/concentrations should be determined by the researcher.

Suggested dilution	Recommended dilution
IHC-P	1-2µg/ml for 30 minutes at RT
<b>Note : Staining of formalin-fixed tissues requires heating tissue sections in 10mM Tris with 1mM EDTA, pH 9.0, for 45 min at 95°C followed by cooling at RT for 20 minutes.</b>	

Not tested in other applications.

**Product Note** This antibody recognizes an epitope encoded by exon v4 on the variant portion of human CD44.

## Properties

Form	Liquid
Buffer	PBS, 0.05% BSA
Preservative	0.05% Sodium azide
Storage	Store as concentrated solution. Centrifuge briefly prior to opening vial. For short-term storage (1-2 weeks), store at 4°C. For long-term storage, aliquot and store at -20°C or below. Avoid multiple freeze-thaw cycles.
Concentration	0.2 mg/ml (Please refer to the vial label for the specific concentration.)
Immunogen	Recombinant fragment corresponding to the v4 domain of human CD44
Purification	Protein A/G purified
Conjugation	Unconjugated

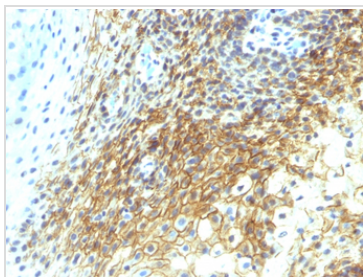
## Note

For laboratory research use only. Not for any clinical, therapeutic, or diagnostic use in humans or animals. Not for animal or human consumption.

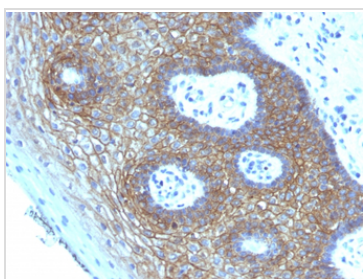
Purchasers shall not, and agree not to enable third parties to, analyze, copy, reverse engineer or otherwise attempt to determine the structure or sequence of the product.



For full product information, images and publications, please visit our [website](#).

**DATA IMAGES**

**GTX34520 IHC-P Image**

IHC-P analysis of human tongue squamous cell carcinoma tissue using GTX34520 CD44v4 antibody [CD44v4/1219].


**GTX34520 IHC-P Image**

IHC-P analysis of human cervical squamous cell carcinoma tissue using GTX34520 CD44v4 antibody [CD44v4/1219].



For full product information, images and publications, please visit our [website](#).