

CD63 antibody [NK1/C3]

Cat. No. GTX34538

Host	Mouse
Clonality	Monoclonal
Isotype	IgG1
Application	ICC/IF, IHC-P, FACS
Reactivity	Human, Mouse

Package
100 µg

APPLICATION

Application Note

*Optimal dilutions/concentrations should be determined by the researcher.

Suggested dilution	Recommended dilution
ICC/IF	1-2µg/ml
IHC-P	1-2µg/ml for 30 minutes at RT
FACS	1-2µg/10 ⁶ cells

Note : Staining of formalin-fixed tissues requires heating tissue sections in 10mM Tris with 1mM EDTA, pH 9.0, for 45 min at 95°C followed by cooling at RT for 20 minutes.

Not tested in other applications.

Calculated MW	26 kDa. (Note)
Product Note	This MAb recognizes protein of 26kDa-60kDa, which is identified as CD63. Its epitope is different from that of MAb LAMP3/529.

PROPERTIES

Form	Liquid
Buffer	10mM PBS, 0.05% BSA
Preservative	0.05% Sodium azide
Storage	Store as concentrated solution. Centrifuge briefly prior to opening vial. For short-term storage (1-2 weeks), store at 4°C. For long-term storage, aliquot and store at -20°C or below. Avoid multiple freeze-thaw cycles.
Concentration	0.2 mg/ml (Please refer to the vial label for the specific concentration.)
Immunogen	Smooth plasma membrane fraction of MeWo cells
Purification	Protein A/G purified
Conjugation	Unconjugated

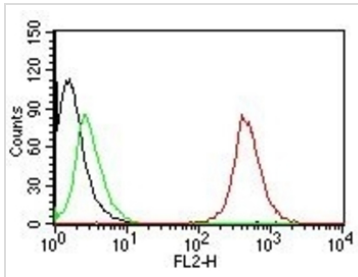


For full product information, images and publications, please visit our [website](#).

For laboratory research use only. Not for any clinical, therapeutic, or diagnostic use in humans or animals. Not for animal or human consumption.

Note

Purchasers shall not, and agree not to enable third parties to, analyze, copy, reverse engineer or otherwise attempt to determine the structure or sequence of the product.

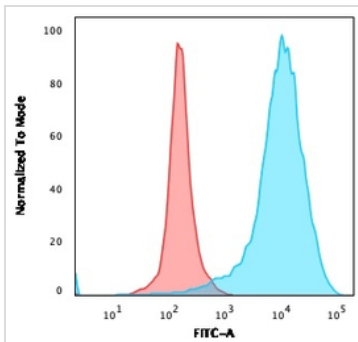
DATA IMAGES

GTX34538 FACS Image

FACS analysis of MCF-7 cells using GTX34538 CD63 antibody [NKI/C3].

Black : Blank

Green : Isotype Control

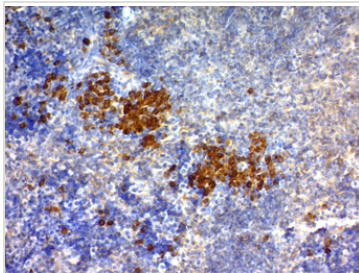
Red : Primary antibody


GTX34538 FACS Image

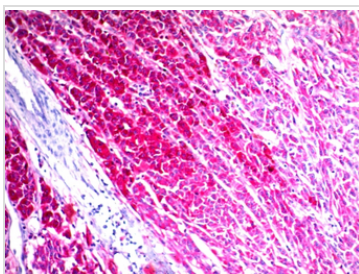
FACS analysis of PFA-fixed U87MG cells using GTX34538 CD63 antibody [NKI/C3].

Blue : Primary antibody

Red : Isotype control


GTX34538 IHC-P Image

IHC-P analysis of mouse spleen tissue using GTX34538 CD63 antibody [NKI/C3].


GTX34538 IHC-P Image

IHC-P analysis of human melanoma tissue using GTX34538 CD63 antibody [NKI/C3].



For full product information, images and publications, please visit our [website](https://www.genetex.com).