

CD63 antibody [MX-49.129.5]

Cat. No. GTX34540

Host	Mouse
Clonality	Monoclonal
Isotype	IgG1
Applications	WB, ICC/IF, IHC-P, FCM
Reactivity	Human, Mouse

★★★★★ Review (1)

Package
100 µg

Applications

Application Note

*Optimal dilutions/concentrations should be determined by the researcher.

Suggested dilution	Recommended dilution
WB	Assay dependent
ICC/IF	1-2µg/ml
IHC-P	1-2µg/ml for 30 minutes at RT
FCM	1-2µg/10 ⁶ cells

Note : Staining of formalin-fixed tissues requires heating tissue sections in 10mM Tris with 1mM EDTA, pH 9.0, for 45 min at 95°C followed by cooling at RT for 20 minutes.

Not tested in other applications.

Calculated MW 26 kDa. ([Note](#))**Product Note** This MAb recognizes protein of 26kDa-60kDa, which is identified as CD63. Its epitope is different from that of MAb LAMP3/529.

Properties

Form	Liquid
Buffer	PBS, 0.05% BSA
Preservative	0.05% Sodium azide
Storage	Store as concentrated solution. Centrifuge briefly prior to opening vial. For short-term storage (1-2 weeks), store at 4°C. For long-term storage, aliquot and store at -20°C or below. Avoid multiple freeze-thaw cycles.
Concentration	0.2 mg/ml (Please refer to the vial label for the specific concentration.)
Immunogen	Full length CD63 of human origin
Purification	Protein A/G purified
Conjugation	Unconjugated

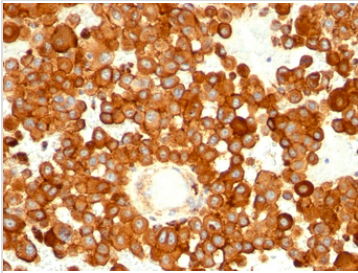
For full product information, images and publications, please visit our [website](#).

For laboratory research use only. Not for any clinical, therapeutic, or diagnostic use in humans or animals. Not for animal or human consumption.

Note

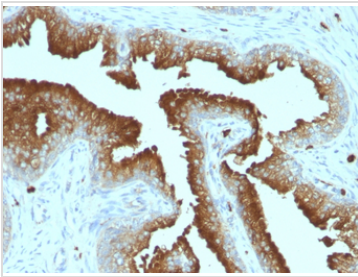
Purchasers shall not, and agree not to enable third parties to, analyze, copy, reverse engineer or otherwise attempt to determine the structure or sequence of the product.

DATA IMAGES



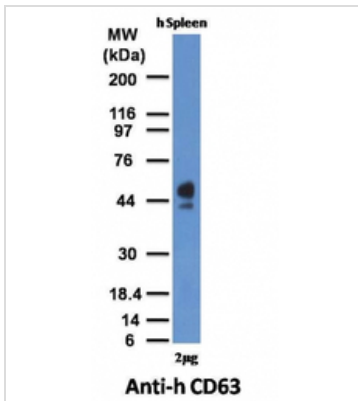
GTX34540 IHC-P Image

IHC-P analysis of human melanoma tissue using GTX34540 CD63 antibody [MX-49.129.5].



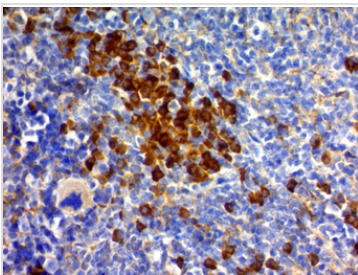
GTX34540 IHC-P Image

IHC-P analysis of human prostate carcinoma tissue using GTX34540 CD63 antibody [MX-49.129.5].



GTX34540 WB Image

WB analysis of human spleen tissue lysate using GTX34540 CD63 antibody [MX-49.129.5].



GTX34540 IHC-P Image

IHC-P analysis of mouse spleen tissue using GTX34540 CD63 antibody [MX-49.129.5].



For full product information, images and publications, please visit our [website](#).