

CD71 antibody [66IG10]

Cat. No. GTX34547

Host	Mouse
Clonality	Monoclonal
Isotype	IgG1
Applications	ICC/IF, FCM, ELISA
Reactivity	Human

References (1)

Package

100 µg

Applications

Application Note

*Optimal dilutions/concentrations should be determined by the researcher.

Suggested dilution	Recommended dilution
ICC/IF	1-2µg/ml
FCM	1-2µg/10 ⁶ cells
ELISA	2-4µg/ml (for coating)

Note : For ELISA coating, recommend using BSA-free format (please contact us for PBS only format).

Not tested in other applications.

Product Note

This MAb is highly specific to CD71 and shows no cross-reaction with other related proteins. Its epitope is localized in the extracellular domain of CD71.

Properties

Form	Liquid
Buffer	PBS, 0.05% BSA
Preservative	0.05% Sodium azide
Storage	Store as concentrated solution. Centrifuge briefly prior to opening vial. For short-term storage (1-2 weeks), store at 4°C. For long-term storage, aliquot and store at -20°C or below. Avoid multiple freeze-thaw cycles.
Concentration	0.2 mg/ml (Please refer to the vial label for the specific concentration.)
Immunogen	Human thymocytes (T-cells)
Purification	Protein A/G purified
Conjugation	Unconjugated

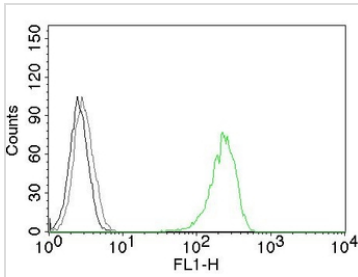


For full product information, images and publications, please visit our [website](#).

For laboratory research use only. Not for any clinical, therapeutic, or diagnostic use in humans or animals. Not for animal or human consumption.

Note

Purchasers shall not, and agree not to enable third parties to, analyze, copy, reverse engineer or otherwise attempt to determine the structure or sequence of the product.

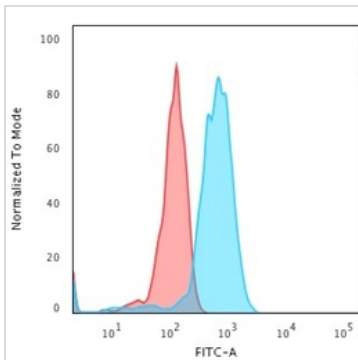
DATA IMAGES

GTX34547 FCM Image

FACS analysis of K562 cells using GTX34547 CD71 antibody [66IG10].

Black : Blank

Grey : Isotype Control

Green : Primary antibody


GTX34547 FCM Image

FACS analysis of Jurkat cells using GTX34547 CD71 antibody [66IG10].

Blue : Primary antibody

Red : Isotype control



For full product information, images and publications, please visit our [website](#).