

## CDH16 antibody [CDH16/1071]

Cat No. GTX34580

<b>Host</b>	Mouse
<b>Clonality</b>	Monoclonal
<b>Isotype</b>	IgG1
<b>Application</b>	WB, IHC-P, FACS, ELISA
<b>Reactivity</b>	Human, Mouse, Rat, Rabbit, Dog

Package  
100 µg

## APPLICATION

## Application Note

\*Optimal dilutions/concentrations should be determined by the researcher.

Suggested dilution	Dilution
WB	1-2µg/ml
IHC-P	1-2µg/ml for 30 minutes at RT
FACS	1-2µg/10 <sup>6</sup> cells
ELISA	2-4µg/ml (for coating)

**Note : Staining of formalin-fixed tissues requires heating tissue sections in 10mM Tris with 1mM EDTA, pH 9.0, for 45 min at 95°C followed by cooling at RT for 20 minutes.**

**For ELISA coating, recommend using BSA-free format (please contact us for PBS only format).**

Not tested in other applications.

**Calculated MW** 90 kDa. ([Note](#))

## PROPERTIES

<b>Form</b>	Liquid
<b>Buffer</b>	10mM PBS, 0.05% BSA, 0.05% sodium azide (Please contact us for PBS only format)
<b>Storage</b>	Store as concentrated solution. Centrifuge briefly prior to opening vial. For short-term storage (1-2 weeks), store at 4°C. For long-term storage, aliquot and store at -20°C or below. Avoid multiple freeze-thaw cycles.
<b>Concentration</b>	0.2 mg/ml (Please refer to the vial label for the specific concentration.)
<b>Immunogen</b>	Recombinant full-length human CDH16 protein
<b>Purification</b>	Protein A/G purified
<b>Conjugation</b>	Unconjugated
<b>Note</b>	For laboratory use only. Not for any clinical, therapeutic, or diagnostic use in humans or animals. Not for animal or human consumption.

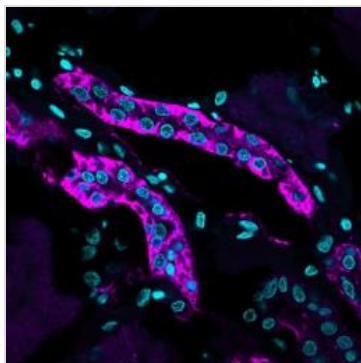


For full product information, images and publications, please visit our [website](#).

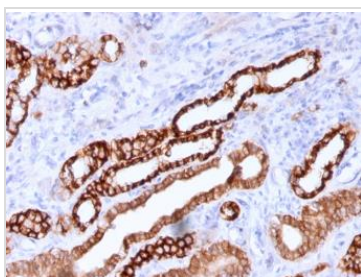
## DATA IMAGES

**GTX34580 WB Image**

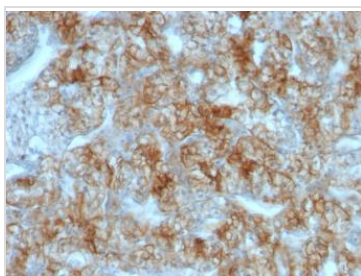
WB analysis of human kidney tissue lysate using GTX34580 CDH16 antibody [CDH16/1071].

**GTX34580 IHC-P Image**

IHC-P analysis of human kidney tissue using GTX34580 CDH16 antibody [CDH16/1071].

**GTX34580 IHC-P Image**

IHC-P analysis of human kidney tissue using GTX34580 CDH16 antibody [CDH16/1071].

**GTX34580 IHC-P Image**

IHC-P analysis of human renal cell carcinoma tissue using GTX34580 CDH16 antibody [CDH16/1071].



For full product information, images and publications, please visit our [website](#).