

## CDw75 antibody [LN-1]

Cat. No. GTX34584

Host	Mouse
Clonality	Monoclonal
Isotype	IgM
Applications	ICC/IF, IHC-P, IHC-Fr, FCM
Reactivity	Human, Mink

References ( 2 )

Package

100 µg

## Applications

## Application Note

\*Optimal dilutions/concentrations should be determined by the researcher.

Suggested dilution	Recommended dilution
ICC/IF	1-2µg/ml
IHC-P	1-2µg/ml for 30 minutes at RT
IHC-Fr	Assay dependent
FCM	1-2µg/10 <sup>6</sup> cells

**Note : Staining of formalin-fixed tissues requires heating tissue sections in 10mM Tris with 1mM EDTA, pH 9.0, for 45 min at 95°C followed by cooling at RT for 20 minutes.**

Not tested in other applications.

## Properties

Form	Liquid
Buffer	PBS, 0.05% BSA
Preservative	0.05% Sodium azide
Storage	Store as concentrated solution. Centrifuge briefly prior to opening vial. For short-term storage (1-2 weeks), store at 4°C. For long-term storage, aliquot and store at -20°C or below. Avoid multiple freeze-thaw cycles.
Concentration	0.2 mg/ml (Please refer to the vial label for the specific concentration.)
Immunogen	Nuclei from pokeweed mitogen-stimulated peripheral blood lymphocytes.
Purification	PEG precipitation
Conjugation	Unconjugated

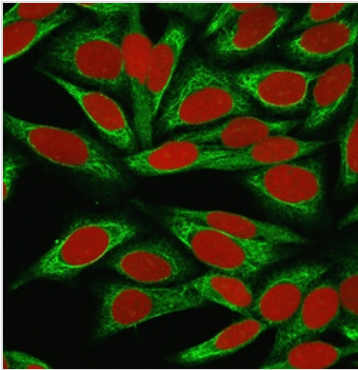
## Note

For laboratory research use only. Not for any clinical, therapeutic, or diagnostic use in humans or animals. Not for animal or human consumption.

Purchasers shall not, and agree not to enable third parties to, analyze, copy, reverse engineer or otherwise attempt to determine the structure or sequence of the product.



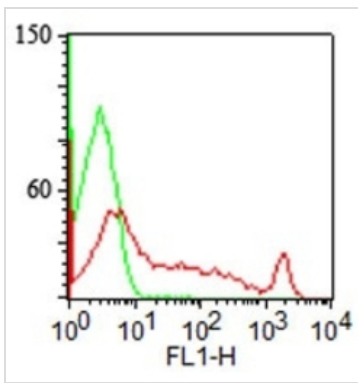
For full product information, images and publications, please visit our [website](#).

**DATA IMAGES**

**GTX34584 ICC/IF Image**

ICC/IF analysis of MeOH-fixed HeLa cells using GTX34584 Cdw75 antibody [LN-1].

Green : Primary antibody

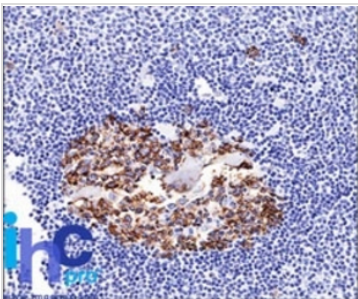
Red : nucleus


**GTX34584 FCM Image**

FACS analysis of human lymphocytes using GTX34584 Cdw75 antibody [LN-1].

Red : Primary antibody

Green : Isotype control


**GTX34584 IHC-P Image**

IHC-P analysis of normal human spleen tissue using GTX34584 Cdw75 antibody [LN-1].



For full product information, images and publications, please visit our [website](https://www.genetex.com).