

Cyclin D1 antibody [CCND1/809]

Cat. No. GTX34617

| | |
|-------------|-------------|
| Host | Mouse |
| Clonality | Monoclonal |
| Isotype | IgG2a |
| Application | IHC-P, FACS |
| Reactivity | Human |

Package
100 µg

APPLICATION

Application Note

*Optimal dilutions/concentrations should be determined by the researcher.

| Suggested dilution | Recommended dilution |
|--------------------|-------------------------------|
| IHC-P | 1-2µg/ml for 30 minutes at RT |
| FACS | 1-2µg/10 ⁶ cells |

Note : Staining of formalin-fixed tissues requires heating tissue sections in 10mM Tris with 1mM EDTA, pH 9.0, for 45 min at 95°C followed by cooling at RT for 20 minutes.

Not tested in other applications.

Calculated MW 34 kDa. ([Note](#))

PROPERTIES

| | |
|---------------|--|
| Form | Liquid |
| Buffer | 10mM PBS, 0.05% BSA |
| Preservative | 0.05% Sodium azide |
| Storage | Store as concentrated solution. Centrifuge briefly prior to opening vial. For short-term storage (1-2 weeks), store at 4°C. For long-term storage, aliquot and store at -20°C or below. Avoid multiple freeze-thaw cycles. |
| Concentration | 0.2 mg/ml (Please refer to the vial label for the specific concentration.) |
| Immunogen | Recombinant human CCND1 protein |
| Purification | Protein A/G purified |
| Conjugation | Unconjugated |

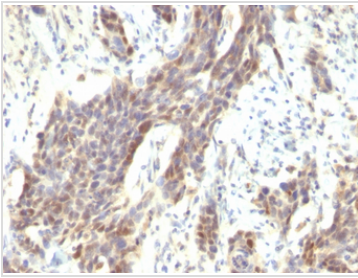
Note

For laboratory research use only. Not for any clinical, therapeutic, or diagnostic use in humans or animals. Not for animal or human consumption.

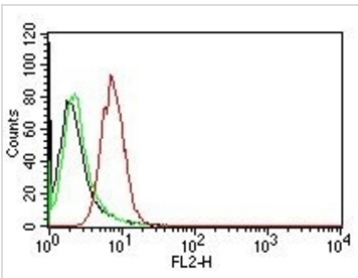
Purchasers shall not, and agree not to enable third parties to, analyze, copy, reverse engineer or otherwise attempt to determine the structure or sequence of the product.



For full product information, images and publications, please visit our [website](#).

DATA IMAGES

GTX34617 IHC-P Image

IHC-P analysis of human bladder carcinoma tissue using GTX34617 Cyclin D1 antibody [CCND1/809].

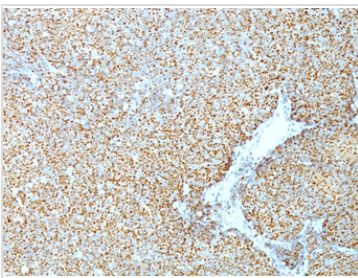

GTX34617 FACS Image

FACS analysis of HeLa cells using GTX34617 Cyclin D1 antibody [CCND1/809].

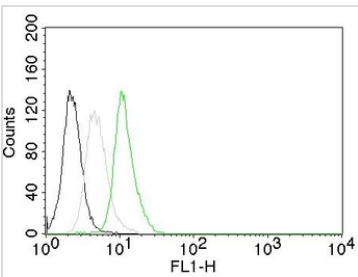
Black : Blank

Green : Isotype Control

Red : Primary antibody


GTX34617 IHC-P Image

IHC-P analysis of human mantle cell lymphoma tissue using GTX34617 Cyclin D1 antibody [CCND1/809].


GTX34617 FACS Image

FACS analysis of Jurkat cells using GTX34617 Cyclin D1 antibody [CCND1/809].

Black : Blank

Grey : Isotype Control

Green : Primary antibody



For full product information, images and publications, please visit our [website](https://www.genetex.com).