

Cytochrome C antibody [7H8.2C12]

Cat. No. GTX34622

Host	Mouse
Clonality	Monoclonal
Isotype	IgG2b
Application	WB, IHC-P, FACS
Reactivity	Human, Mouse, Rat, Drosophila, Dog, Frog, Horse, pigeon

Package
100 µg

APPLICATION

Application Note

*Optimal dilutions/concentrations should be determined by the researcher.

Suggested dilution	Recommended dilution
WB	1-2µg/ml
IHC-P	1-2µg/ml for 30 minutes at RT
FACS	1-2µg/10 ⁶ cells

Note : Staining of formalin-fixed tissues requires heating tissue sections in 10mM Tris with 1mM EDTA, pH 9.0, for 45 min at 95°C followed by cooling at RT for 20 minutes.

Not tested in other applications.

Calculated MW	12 kDa. (Note)
Product Note	This antibody recognizes an epitope within amino acids 93-104 of pigeon Cytochrome C.

PROPERTIES

Form	Liquid
Buffer	10mM PBS, 0.05% BSA, 0.05% sodium azide (Please contact us for PBS only format)
Storage	Store as concentrated solution. Centrifuge briefly prior to opening vial. For short-term storage (1-2 weeks), store at 4°C. For long-term storage, aliquot and store at -20°C or below. Avoid multiple freeze-thaw cycles.
Concentration	0.2 mg/ml (Please refer to the vial label for the specific concentration.)
Immunogen	Synthetic peptides corresponding to amino acid 1-80, 81-104 and 66-104 of pigeon cytochrome c
Purification	Protein A/G purified
Conjugation	Unconjugated

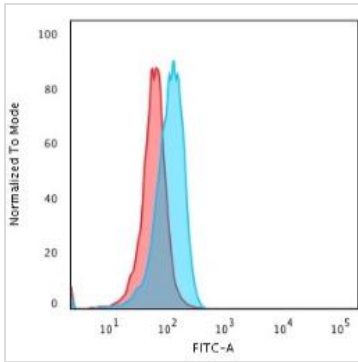


For full product information, images and publications, please visit our [website](#).

For laboratory research use only. Not for any clinical, therapeutic, or diagnostic use in humans or animals. Not for animal or human consumption.

Note

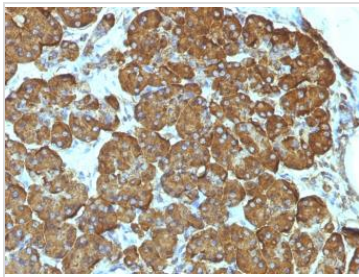
Purchasers shall not, and agree not to enable third parties to, analyze, copy, reverse engineer or otherwise attempt to determine the structure or sequence of the product.

DATA IMAGES

GTx34622 FACS Image

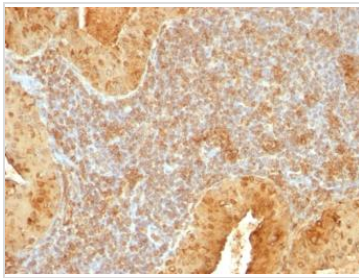
FACS analysis of PFA fixed HeLa cells using GTx34622 Cytochrome C antibody [7H8.2C12].

Blue : Primary antibody

Red : Isotype control


GTx34622 IHC-P Image

IHC-P analysis of human pancreas tissue using GTx34622 Cytochrome C antibody [7H8.2C12].


GTx34622 IHC-P Image

IHC-P analysis of human salivary tumor tissue using GTx34622 Cytochrome C antibody [7H8.2C12].



For full product information, images and publications, please visit our [website](https://www.genetex.com).