

Cytokeratin 14 antibody [LL002]

Cat. No. GTX34631

Host	Mouse
Clonality	Monoclonal
Isotype	IgG3
Application	ICC/IF, IHC-P, FACS
Reactivity	Human, Mouse, Rat

Reference (1)

Package

100 µg

APPLICATION

Application Note

*Optimal dilutions/concentrations should be determined by the researcher.

Suggested dilution	Recommended dilution
ICC/IF	1-2µg/ml
IHC-P	1-2µg/ml for 30 min at RT
FACS	1-2µg/10 ⁶ cells

Note : Staining of formalin-fixed tissues requires heating tissue sections in 10mM Tris with 1mM EDTA, pH 9.0, for 45 min at 95°C followed by cooling at RT for 20 minutes.

Not tested in other applications.

Calculated MW 52 kDa. ([Note](#))

PROPERTIES

Form	Liquid
Buffer	10mM PBS, 0.05% BSA
Preservative	0.05% Sodium azide
Storage	Store as concentrated solution. Centrifuge briefly prior to opening vial. For short-term storage (1-2 weeks), store at 4°C. For long-term storage, aliquot and store at -20°C or below. Avoid multiple freeze-thaw cycles.
Concentration	0.2 mg/ml (Please refer to the vial label for the specific concentration.)
Immunogen	A synthetic peptide of 15 amino acid from the C-terminus of human keratin 14.
Purification	Protein A/G purified
Conjugation	Unconjugated



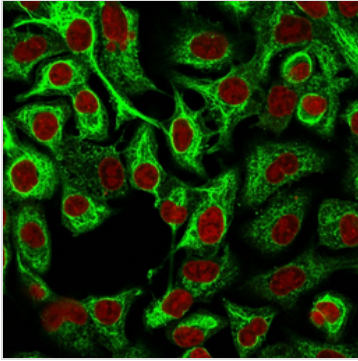
For full product information, images and publications, please visit our [website](#).

For laboratory research use only. Not for any clinical, therapeutic, or diagnostic use in humans or animals. Not for animal or human consumption.

Note

Purchasers shall not, and agree not to enable third parties to, analyze, copy, reverse engineer or otherwise attempt to determine the structure or sequence of the product.

DATA IMAGES

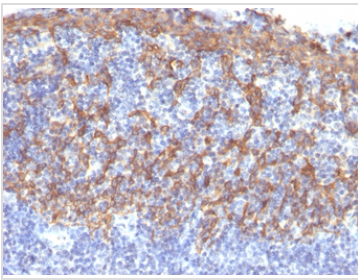


GTX34631 ICC/IF Image

ICC/IF analysis of A549 cells using GTX34631 Cytokeratin 14 antibody [LL002].

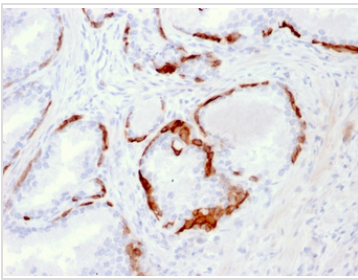
Green : Primary antibody

Red : nucleus



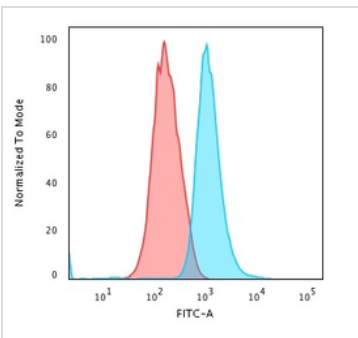
GTX34631 IHC-P Image

IHC-P analysis of human tonsil tissue using GTX34631 Cytokeratin 14 antibody [LL002].



GTX34631 IHC-P Image

IHC-P analysis of human prostate carcinoma tissue using GTX34631 Cytokeratin 14 antibody [LL002].



GTX34631 FACS Image

FACS analysis of trypanized MeOH-fixed HeLa cells using GTX34631 Cytokeratin 14 antibody [LL002].

Blue : Primary antibody

Red : Isotype control



For full product information, images and publications, please visit our [website](https://www.genetex.com).