

Cytokeratin 15 antibody [LHK15]

Cat. No. GTX34632

Host	Mouse
Clonality	Monoclonal
Isotype	IgG2a
Applications	IHC-P
Reactivity	Human, Rat, Bovine

References (1)

Package

100 µg

Applications

Application Note

*Optimal dilutions/concentrations should be determined by the researcher.

Suggested dilution	Recommended dilution
IHC-P	0.1-0.2µg/ml for 30 min at RT
Note : Staining of formalin-fixed tissues requires heating tissue sections in 10mM Tris with 1mM EDTA, pH 9.0, for 45 min at 95°C followed by cooling at RT for 20 minutes.	

Not tested in other applications.

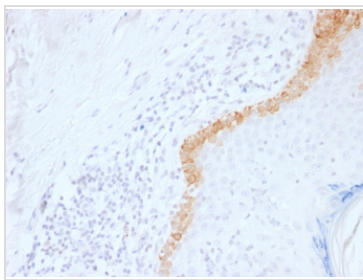
Properties

Form	Liquid
Buffer	PBS, 0.05% BSA
Preservative	0.05% Sodium azide
Storage	Store as concentrated solution. Centrifuge briefly prior to opening vial. For short-term storage (1-2 weeks), store at 4°C. For long-term storage, aliquot and store at -20°C or below. Avoid multiple freeze-thaw cycles.
Concentration	0.2 mg/ml (Please refer to the vial label for the specific concentration.)
Immunogen	A 17 amino acids synthetic peptide from the C- terminal of Human Cytokeratin 15
Purification	Protein A/G purified
Conjugation	Unconjugated
Note	For laboratory research use only. Not for any clinical, therapeutic, or diagnostic use in humans or animals. Not for animal or human consumption.
	Purchasers shall not, and agree not to enable third parties to, analyze, copy, reverse engineer or otherwise attempt to determine the structure or sequence of the product.



For full product information, images and publications, please visit our [website](#).

DATA IMAGES



GTX34632 IHC-P Image

IHC-P analysis of human skin tissue using GTX34632 Cytokeratin 15 antibody [LHK15].



For full product information, images and publications, please visit our [website](#).