

Cytokeratin 18 antibody [DE-K18]

Cat. No. GTX34641

| | |
|---------------------|------------------------|
| Host | Mouse |
| Clonality | Monoclonal |
| Isotype | IgG1 |
| Applications | WB, ICC/IF, IHC-P, FCM |
| Reactivity | Human, Cat, Dog |

Package
100 µg

Applications

Application Note

*Optimal dilutions/concentrations should be determined by the researcher.

| Suggested dilution | Recommended dilution |
|--------------------|-----------------------------|
| WB | 1-2µg/ml |
| ICC/IF | 1-2µg/ml |
| IHC-P | 2-4µg/ml for 30 min at RT |
| FCM | 1-2µg/10 ⁶ cells |

Note : Staining of formalin-fixed tissues requires heating tissue sections in 10mM Tris with 1mM EDTA, pH 9.0, for 45 min at 95°C followed by cooling at RT for 20 minutes.

Not tested in other applications.

Calculated MW 48 kDa. ([Note](#))

Product Note

This MAb reacts with a wide variety of simple epithelia. It does not react with stratified squamous epithelia. It reacts with epithelial tumors of the gastrointestinal tract, lung, breast, pancreas, ovary, and thyroid. We do not recommend use of this product for Rat samples.

Properties

| | |
|----------------------|--|
| Form | Liquid |
| Buffer | PBS, 0.05% BSA |
| Preservative | 0.05% Sodium azide |
| Storage | Store as concentrated solution. Centrifuge briefly prior to opening vial. For short-term storage (1-2 weeks), store at 4°C. For long-term storage, aliquot and store at -20°C or below. Avoid multiple freeze-thaw cycles. |
| Concentration | 0.2 mg/ml (Please refer to the vial label for the specific concentration.) |
| Immunogen | Cytoskeletal preparation extracted from the human vulvar squamous carcinoma cell line A431 |
| Purification | Protein A/G purified |



For full product information, images and publications, please visit our [website](#).

Date 2026 / 05 / 05 Page 1 of 2

Conjugation

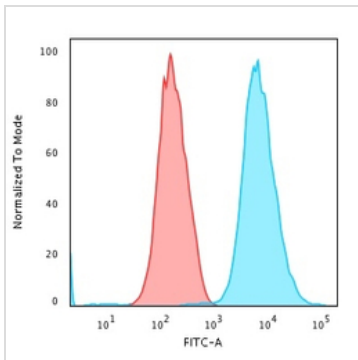
Unconjugated

For laboratory research use only. Not for any clinical, therapeutic, or diagnostic use in humans or animals. Not for animal or human consumption.

Note

Purchasers shall not, and agree not to enable third parties to, analyze, copy, reverse engineer or otherwise attempt to determine the structure or sequence of the product.

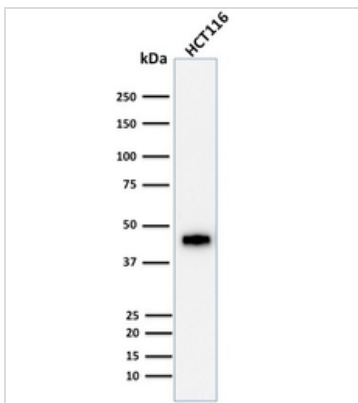
DATA IMAGES

**GTX34641 FCM Image**

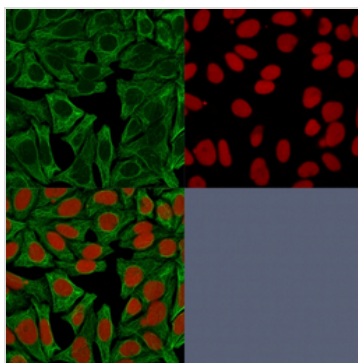
FACS analysis of trypsinised MeOH-fixed HeLa cells using GTX34641 Cytokeratin 18 antibody [DE-K18].

Blue : Primary antibody

Red : Isotype control

**GTX34641 WB Image**

WB analysis of HCT116 cell lysate using GTX34641 Cytokeratin 18 antibody [DE-K18].

**GTX34641 ICC/IF Image**

ICC/IF analysis of HeLa cells using GTX34641 Cytokeratin 18 antibody [DE-K18].

Green : Primary antibody

Red : nucleus



For full product information, images and publications, please visit our [website](#).