

## Cytokeratin 18 antibody [KRT18/834]

Cat. No. GTX34642

Host	Mouse
Clonality	Monoclonal
Isotype	IgG1
Applications	WB, ICC/IF, IHC-P, FCM
Reactivity	Human

Package  
100 µg

## Applications

## Application Note

\*Optimal dilutions/concentrations should be determined by the researcher.

Suggested dilution	Recommended dilution
WB	1-2µg/ml
ICC/IF	1-2µg/ml
IHC-P	1-2µg/ml for 30 min at RT
FCM	1-2µg/10 <sup>6</sup> cells

**Note : Staining of formalin-fixed tissues requires heating tissue sections in 10mM Tris with 1mM EDTA, pH 9.0, for 45 min at 95°C followed by cooling at RT for 20 minutes.**

Not tested in other applications.

Calculated MW 48 kDa. ( [Note](#) )

## Product Note

This MAb reacts with a wide variety of simple epithelia. It does not react with stratified squamous epithelia. It reacts with epithelial tumors of the gastrointestinal tract, lung, breast, pancreas, ovary, and thyroid. We do not recommend use of this product for Mouse,Rat,Sheep,Bovine,Dog,Hamster,Pig samples.

## Properties

Form	Liquid
Buffer	PBS, 0.05% BSA
Preservative	0.05% Sodium azide
Storage	Store as concentrated solution. Centrifuge briefly prior to opening vial. For short-term storage (1-2 weeks), store at 4°C. For long-term storage, aliquot and store at -20°C or below. Avoid multiple freeze-thaw cycles.
Concentration	0.2 mg/ml (Please refer to the vial label for the specific concentration.)
Immunogen	Recombinant full-length human KRT18 protein
Purification	Protein A/G purified



For full product information, images and publications, please visit our [website](#).

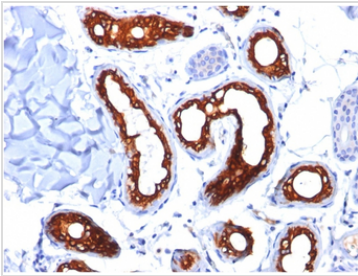
**Conjugation**

Unconjugated

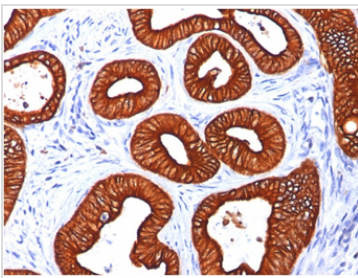
**Note**

For laboratory research use only. Not for any clinical, therapeutic, or diagnostic use in humans or animals. Not for animal or human consumption.

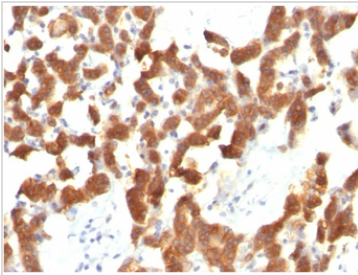
Purchasers shall not, and agree not to enable third parties to, analyze, copy, reverse engineer or otherwise attempt to determine the structure or sequence of the product.

**DATA IMAGES**

**GTx34642 IHC-P Image**

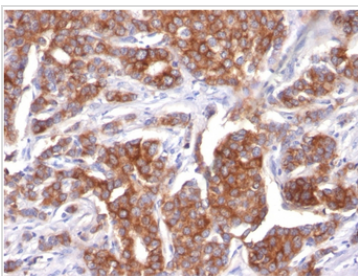
IHC-P analysis of human skin tissue using GTx34642 Cytokeratin 18 antibody [KRT18/834].


**GTx34642 IHC-P Image**

IHC-P analysis of human colon carcinoma tissue using GTx34642 Cytokeratin 18 antibody [KRT18/834].


**GTx34642 IHC-P Image**

IHC-P analysis of human thyroid carcinoma tissue using GTx34642 Cytokeratin 18 antibody [KRT18/834].


**GTx34642 IHC-P Image**

IHC-P analysis of human breast carcinoma tissue using GTx34642 Cytokeratin 18 antibody [KRT18/834].


 For full product information, images and publications, please visit our [website](https://www.genetex.com).