

Cytokeratin 18 antibody [Cocktail]

Cat. No. GTX34645

Host	Mouse
Clonality	Monoclonal
Isotype	IgG1
Applications	WB, IHC-P, FCM
Reactivity	Human

Package
100 µg

Applications

Application Note

*Optimal dilutions/concentrations should be determined by the researcher.

Suggested dilution	Recommended dilution
WB	1-2µg/ml
IHC-P	1-2µg/ml for 30 min at RT
FCM	1-2µg/10 ⁶ cells

Note : Staining of formalin-fixed tissues requires heating tissue sections in 10mM Tris with 1mM EDTA, pH 9.0, for 45 min at 95°C followed by cooling at RT for 20 minutes.

Not tested in other applications.

Calculated MW	48 kDa. (Note)
Product Note	This MAb reacts with a wide variety of simple epithelia. It does not react with stratified squamous epithelia. It reacts with epithelial tumors of the gastrointestinal tract, lung, breast, pancreas, ovary, and thyroid.

Properties

Form	Liquid
Buffer	PBS, 0.05% BSA
Preservative	0.05% Sodium azide
Storage	Store as concentrated solution. Centrifuge briefly prior to opening vial. For short-term storage (1-2 weeks), store at 4°C. For long-term storage, aliquot and store at -20°C or below. Avoid multiple freeze-thaw cycles.
Concentration	0.2 mg/ml (Please refer to the vial label for the specific concentration.)
Immunogen	Recombinant full-length human KRT18 protein
Purification	Protein A/G purified
Conjugation	Unconjugated

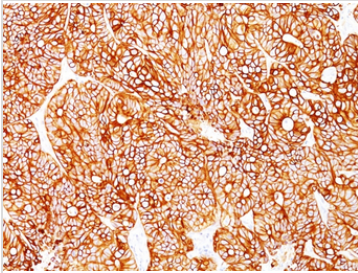


For full product information, images and publications, please visit our [website](#).

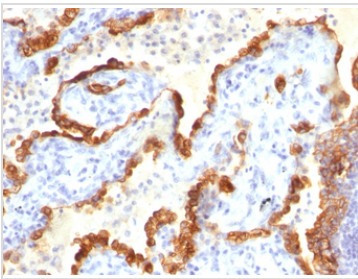
For laboratory research use only. Not for any clinical, therapeutic, or diagnostic use in humans or animals. Not for animal or human consumption.

Note

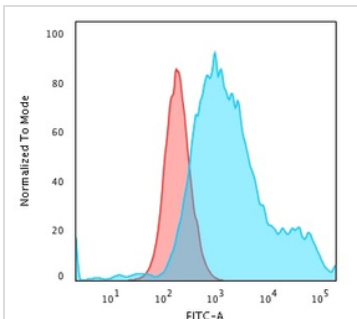
Purchasers shall not, and agree not to enable third parties to, analyze, copy, reverse engineer or otherwise attempt to determine the structure or sequence of the product.

DATA IMAGES

GTX34645 IHC-P Image

IHC-P analysis of human colon carcinoma tissue using GTX34645 Cytokeratin 18 antibody [Cocktail].


GTX34645 IHC-P Image

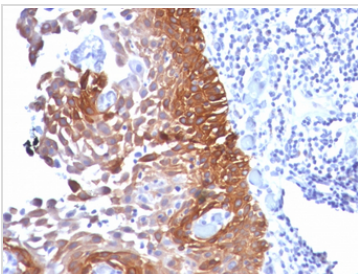
IHC-P analysis of human lung cancer tissue using GTX34645 Cytokeratin 18 antibody [Cocktail].


GTX34645 FCM Image

FACS analysis of PFA-fixed HeLa cells using GTX34645 Cytokeratin 18 antibody [Cocktail].

Blue : Primary antibody

Red : Isotype control


GTX34645 IHC-P Image

IHC-P analysis of human cervical ca tissue using GTX34645 Cytokeratin 18 antibody [Cocktail].



For full product information, images and publications, please visit our [website](https://www.genetex.com).