

## Cytokeratin 19 antibody [KRT19/800]

**Cat. No. GTX34651**

<b>Host</b>	Mouse
<b>Clonality</b>	Monoclonal
<b>Isotype</b>	IgG1
<b>Applications</b>	WB, ICC/IF, IHC-P, FCM
<b>Reactivity</b>	Human, Mouse, Rat

References ( 1 )

Package

100 µg

## Applications

**Application Note**

\*Optimal dilutions/concentrations should be determined by the researcher.

Suggested dilution	Recommended dilution
WB	1-2µg/ml
ICC/IF	1-2µg/ml
IHC-P	1-2µg/ml for 30 minutes at RT
FCM	0.5-1µg/10 <sup>6</sup> cells

**Note : Staining of formalin-fixed tissues requires heating tissue sections in 10mM Tris with 1mM EDTA, pH 9.0, for 45 min at 95°C followed by cooling at RT for 20 minutes.**

Not tested in other applications.

**Calculated MW** 44 kDa. ( [Note](#) )

## Properties

<b>Form</b>	Liquid
<b>Buffer</b>	PBS, 0.05% BSA
<b>Preservative</b>	0.05% Sodium azide
<b>Storage</b>	Store as concentrated solution. Centrifuge briefly prior to opening vial. For short-term storage (1-2 weeks), store at 4°C. For long-term storage, aliquot and store at -20°C or below. Avoid multiple freeze-thaw cycles.
<b>Concentration</b>	0.2 mg/ml (Please refer to the vial label for the specific concentration.)
<b>Immunogen</b>	Recombinant full-length human KRT19 protein.
<b>Purification</b>	Protein A/G purified
<b>Conjugation</b>	Unconjugated



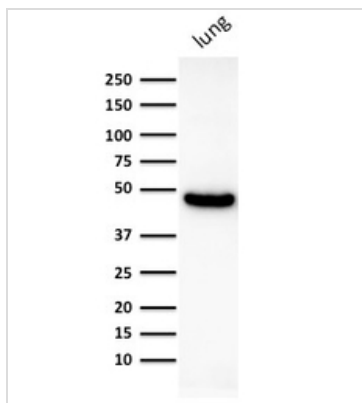
For full product information, images and publications, please visit our [website](#).

For laboratory research use only. Not for any clinical, therapeutic, or diagnostic use in humans or animals. Not for animal or human consumption.

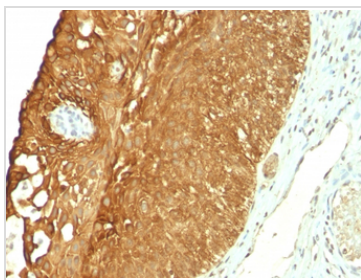
**Note**

Purchasers shall not, and agree not to enable third parties to, analyze, copy, reverse engineer or otherwise attempt to determine the structure or sequence of the product.

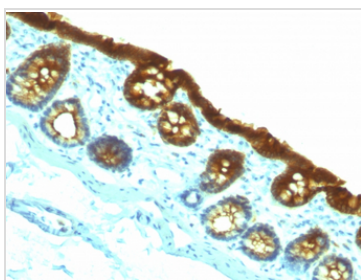
## DATA IMAGES

**GTX34651 WB Image**

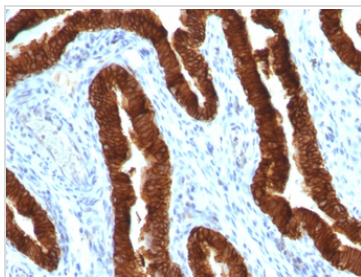
WB analysis of human lung tissue lysate using GTX34651 Cytokeratin 19 antibody [KRT19/800].

**GTX34651 IHC-P Image**

IHC-P analysis of human cervical carcinoma tissue using GTX34651 Cytokeratin 19 antibody [KRT19/800].

**GTX34651 IHC-P Image**

IHC-P analysis of rat colon tissue using GTX34651 Cytokeratin 19 antibody [KRT19/800].

**GTX34651 IHC-P Image**

IHC-P analysis of formalin-fixed human ovarian carcinoma tissue using GTX34651 Cytokeratin 19 antibody [KRT19/800].



For full product information, images and publications, please visit our [website](#).