

## Cytokeratin 7 antibody [KRT7/1198]

Cat. No. GTX34660

Host	Mouse
Clonality	Monoclonal
Isotype	IgG1
Applications	WB, ICC/IF, IHC-P, FCM
Reactivity	Human, Rat

References ( 1 )

Package

100 µg

## Applications

## Application Note

\*Optimal dilutions/concentrations should be determined by the researcher.

Suggested dilution	Recommended dilution
WB	Assay dependent
ICC/IF	1-2µg/ml
IHC-P	1-2µg/ml for 30 minutes at RT
FCM	1-2µg/10 <sup>6</sup> cells

**Note : Staining of formalin-fixed tissues requires heating tissue sections in 10mM Tris with 1mM EDTA, pH 9.0, for 45 min at 95°C followed by cooling at RT for 20 minutes.**

Not tested in other applications.

**Calculated MW** 51 kDa. ( [Note](#) )

**Product Note** This antibody recognizes an intermediate filament protein (IFP) of 55kDa, which is identified as cytokeratin 7. This MAbs is highly specific to cytokeratin 7 and shows no cross-reaction with other IFPs.

## Properties

Form	Liquid
Buffer	PBS, 0.05% BSA
Preservative	0.05% Sodium azide
Storage	Store as concentrated solution. Centrifuge briefly prior to opening vial. For short-term storage (1-2 weeks), store at 4°C. For long-term storage, aliquot and store at -20°C or below. Avoid multiple freeze-thaw cycles.
Concentration	0.2 mg/ml (Please refer to the vial label for the specific concentration.)
Immunogen	Recombinant full-length human KRT7 protein
Purification	Protein A/G purified
Conjugation	Unconjugated



For full product information, images and publications, please visit our [website](#).

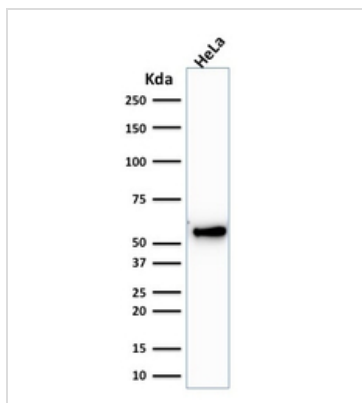
Date 2026 / 01 / 21 Page 1 of 2

For laboratory research use only. Not for any clinical, therapeutic, or diagnostic use in humans or animals. Not for animal or human consumption.

## Note

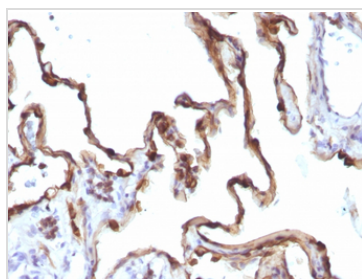
Purchasers shall not, and agree not to enable third parties to, analyze, copy, reverse engineer or otherwise attempt to determine the structure or sequence of the product.

## DATA IMAGES



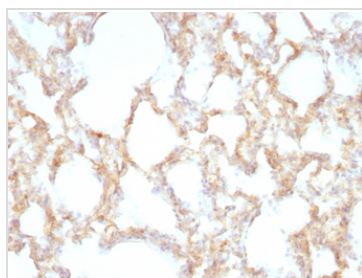
### GTX34660 WB Image

WB analysis of HeLa cell lysate using GTX34660 Cytokeratin 7 antibody [KRT7/1198].



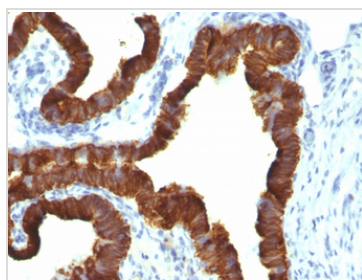
### GTX34660 IHC-P Image

IHC-P analysis of human lung carcinoma tissue using GTX34660 Cytokeratin 7 antibody [KRT7/1198].



### GTX34660 IHC-P Image

IHC-P analysis of rat lung tissue using GTX34660 Cytokeratin 7 antibody [KRT7/1198].



### GTX34660 IHC-P Image

IHC-P analysis of human ovarian carcinoma tissue using GTX34660 Cytokeratin 7 antibody [KRT7/1198].



For full product information, images and publications, please visit our [website](https://www.genetex.com).