

## Cytokeratin 8 antibody [SPM538]

**Cat. No. GTX34665**

<b>Host</b>	Mouse
<b>Clonality</b>	Monoclonal
<b>Isotype</b>	IgG1
<b>Applications</b>	ICC/IF, IHC-P, FCM
<b>Reactivity</b>	Human, Rat, Zebrafish

References ( 1 )

Package

100 µg

## Applications

**Application Note**

\*Optimal dilutions/concentrations should be determined by the researcher.

Suggested dilution	Recommended dilution
ICC/IF	1-2µg/ml
IHC-P	1-2µg/ml for 30 min at RT
FCM	1-2µg/10 <sup>6</sup> cells

**Note : Staining of formalin-fixed tissues requires heating tissue sections in 10mM Tris with 1mM EDTA, pH 9.0, for 45 min at 95°C followed by cooling at RT for 20 minutes.**

Not tested in other applications.

## Properties

<b>Form</b>	Liquid
<b>Buffer</b>	PBS, 0.05% BSA
<b>Preservative</b>	0.05% Sodium azide
<b>Storage</b>	Store as concentrated solution. Centrifuge briefly prior to opening vial. For short-term storage (1-2 weeks), store at 4°C. For long-term storage, aliquot and store at -20°C or below. Avoid multiple freeze-thaw cycles.
<b>Concentration</b>	0.2 mg/ml (Please refer to the vial label for the specific concentration.)
<b>Immunogen</b>	Cytoskeleton preparation containing cytokeratin 8
<b>Purification</b>	Protein A/G purified
<b>Conjugation</b>	Unconjugated

**Note**

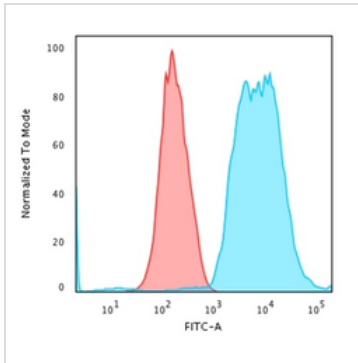
For laboratory research use only. Not for any clinical, therapeutic, or diagnostic use in humans or animals. Not for animal or human consumption.

Purchasers shall not, and agree not to enable third parties to, analyze, copy, reverse engineer or otherwise attempt to determine the structure or sequence of the product.



For full product information, images and publications, please visit our [website](#).

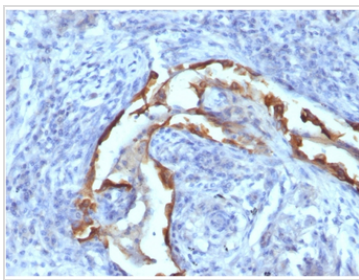
## DATA IMAGES

**GTX34665 FCM Image**

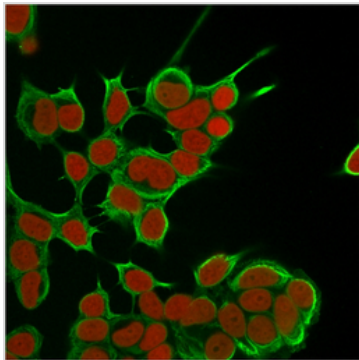
FACS analysis of trypsinized methanol-fixed HeLa cells using GTX34665 Cytokeratin 8 antibody [SPM538].

Blue : Primary antibody

Red : Isotype control

**GTX34665 IHC-P Image**

IHC-P analysis of human lung carcinoma tissue using GTX34665 Cytokeratin 8 antibody [SPM538].

**GTX34665 ICC/IF Image**

ICC/IF analysis of MCF-7 cells using GTX34665 Cytokeratin 8 antibody [SPM538].

Green : Primary antibody

Red : nucleus



For full product information, images and publications, please visit our [website](#).