

# E-Cadherin antibody [CDH1/1525]

**Cat. No. GTX34680**

<b>Host</b>	Mouse
<b>Clonality</b>	Monoclonal
<b>Isotype</b>	IgG1
<b>Applications</b>	WB, ICC/IF, IHC-P, Protein Array
<b>Reactivity</b>	Human

**Package**  
100 µg

## Applications

### Application Note

\*Optimal dilutions/concentrations should be determined by the researcher.

Suggested dilution	Recommended dilution
WB	1-2µg/ml
ICC/IF	1-2µg/ml
IHC-P	1-2µg/ml for 30 minutes at RT
Protein Array	Assay dependent

**Note : Staining of formalin-fixed tissues is enhanced by heating tissue sections in 10mM Tris buffer with 1mM EDTA, pH 9.0, for 45 min at 95°C followed by cooling at RT for 20 minutes.**

Not tested in other applications.

**Calculated MW** 97 kDa. ( [Note](#) )

**Product Note** We do not recommend use of this product for Mouse,Rat samples.

## Properties

<b>Form</b>	Liquid
<b>Buffer</b>	PBS, 0.05% BSA
<b>Preservative</b>	0.05% Sodium azide
<b>Storage</b>	Store as concentrated solution. Centrifuge briefly prior to opening vial. For short-term storage (1-2 weeks), store at 4°C. For long-term storage, aliquot and store at -20°C or below. Avoid multiple freeze-thaw cycles.
<b>Concentration</b>	0.2 mg/ml (Please refer to the vial label for the specific concentration.)
<b>Immunogen</b>	Recombinant human E-Cadherin protein
<b>Purification</b>	Protein A/G purified
<b>Conjugation</b>	Unconjugated

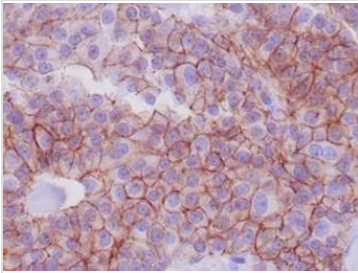


For full product information, images and publications, please visit our [website](#).

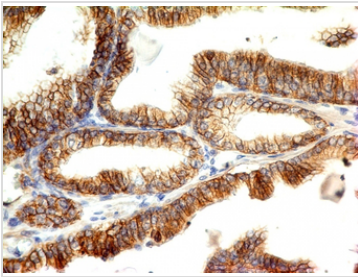
For laboratory research use only. Not for any clinical, therapeutic, or diagnostic use in humans or animals. Not for animal or human consumption.

**Note**

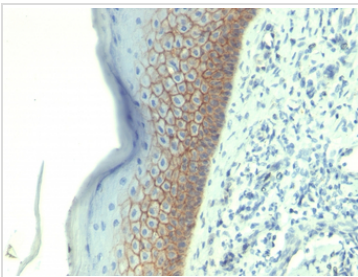
Purchasers shall not, and agree not to enable third parties to, analyze, copy, reverse engineer or otherwise attempt to determine the structure or sequence of the product.

**DATA IMAGES**

**GTX34680 IHC-P Image**

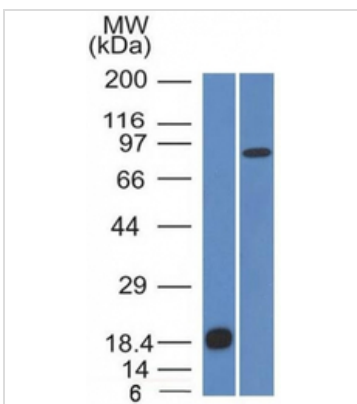
IHC-P analysis of human breast adenocarcinoma tissue using GTX34680 E-Cadherin antibody [CDH1/1525]


**GTX34680 IHC-P Image**

IHC-P analysis of human colon carcinoma tissue using GTX34680 E-Cadherin antibody [CDH1/1525].


**GTX34680 IHC-P Image**

IHC-P analysis of human skin tissue using GTX34680 E-Cadherin antibody [CDH1/1525].


**GTX34680 WB Image**

WB analysis of (A) recombinant E-Cadherin protein (B) human Stomach lysates using GTX34680 E-Cadherin antibody [CDH1/1525].



For full product information, images and publications, please visit our [website](https://www.genetex.com).