

Elastase 3B antibody [CELA3B/1218]

Cat. No. GTX34685

Host	Mouse
Clonality	Monoclonal
Isotype	IgG1
Applications	WB, ELISA
Reactivity	Human

Package
100 µg

Applications

Application Note

*Optimal dilutions/concentrations should be determined by the researcher.

Suggested dilution	Recommended dilution
WB	1-2µg/ml
ELISA	2-4µg/ml (for coating)

Note : For ELISA coating, recommend using BSA-free format (please contact us for PBS only format).

Not tested in other applications.

Calculated MW 29 kDa. ([Note](#))

Properties

Form	Liquid
Buffer	PBS, 0.05% BSA
Preservative	0.05% Sodium azide
Storage	Store as concentrated solution. Centrifuge briefly prior to opening vial. For short-term storage (1-2 weeks), store at 4°C. For long-term storage, aliquot and store at -20°C or below. Avoid multiple freeze-thaw cycles.
Concentration	0.2 mg/ml (Please refer to the vial label for the specific concentration.)
Immunogen	Recombinant human CELA3B protein fragment (around aa 82-238) (exact sequence is proprietary)
Purification	Protein A/G purified
Conjugation	Unconjugated

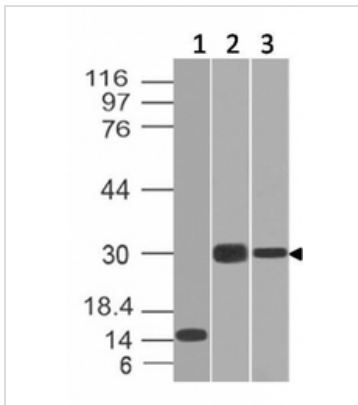
Note

For laboratory research use only. Not for any clinical, therapeutic, or diagnostic use in humans or animals. Not for animal or human consumption.

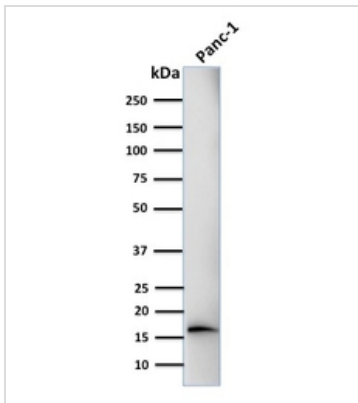
Purchasers shall not, and agree not to enable third parties to, analyze, copy, reverse engineer or otherwise attempt to determine the structure or sequence of the product.



For full product information, images and publications, please visit our [website](#).

DATA IMAGES

GTX34685 WB Image

WB analysis of recombinant Elastase 3B protein, Panc-28, and PANC1 cell lysates using GTX34685 Elastase 3B antibody [CELA3B/1218].


GTX34685 WB Image

WB analysis of PANC-1 cell lysate using GTX34685 Elastase 3B antibody [CELA3B/1218].



For full product information, images and publications, please visit our [website](#).