

## EpCAM antibody [MOC-31]

Cat. No. GTX34700

Host	Mouse
Clonality	Monoclonal
Isotype	IgG1
Applications	WB, IHC-P
Reactivity	Human

Package  
100 µg

## Applications

## Application Note

\*Optimal dilutions/concentrations should be determined by the researcher.

Suggested dilution	Recommended dilution
WB	1-2µg/ml
IHC-P	1-2µg/ml for 30 min at RT

**Note : Staining of formalin-fixed tissues requires heating tissue sections in 10mM Tris with 1mM EDTA, pH 9.0, for 45 min at 95°C followed by cooling at RT for 20 minutes.**

Not tested in other applications.

Calculated MW	35 kDa. ( <a href="#">Note</a> )
Product Note	Binding epitope of this antibody is located in the first EGF-like repeat domain (EGF1) between amino acids 27-59 of Ep-CAM. We do not recommend use of this product for Rat samples.

## Properties

Form	Liquid
Buffer	PBS, 0.05% BSA
Preservative	0.05% Sodium azide
Storage	Store as concentrated solution. Centrifuge briefly prior to opening vial. For short-term storage (1-2 weeks), store at 4°C. For long-term storage, aliquot and store at -20°C or below. Avoid multiple freeze-thaw cycles.
Concentration	0.2 mg/ml (Please refer to the vial label for the specific concentration.)
Immunogen	Neuraminidase treated GLS-1 human small cell lung carcinoma cells
Purification	Protein A/G purified
Conjugation	Unconjugated



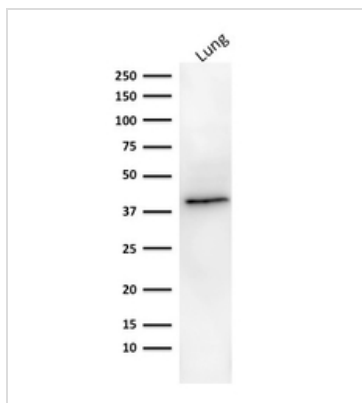
For full product information, images and publications, please visit our [website](#).

For laboratory research use only. Not for any clinical, therapeutic, or diagnostic use in humans or animals. Not for animal or human consumption.

## Note

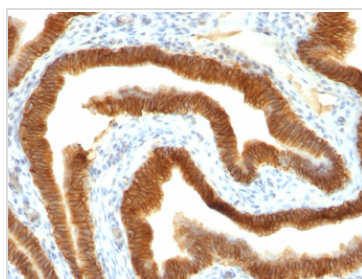
Purchasers shall not, and agree not to enable third parties to, analyze, copy, reverse engineer or otherwise attempt to determine the structure or sequence of the product.

## DATA IMAGES



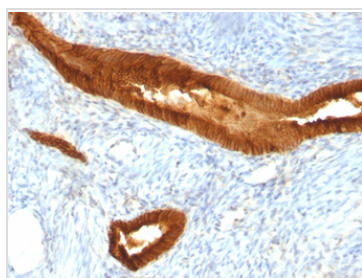
### GTX34700 WB Image

WB analysis of human lung tissue lysate using GTX34700 EpCAM antibody [MOC-31].



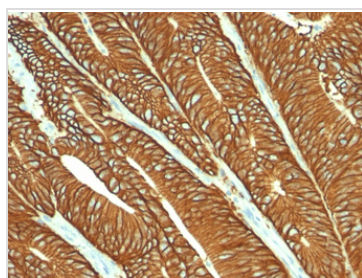
### GTX34700 IHC-P Image

IHC-P analysis of human ovarian carcinoma tissue using GTX34700 EpCAM antibody [MOC-31].



### GTX34700 IHC-P Image

IHC-P analysis of human endometrial carcinoma tissue using GTX34700 EpCAM antibody [MOC-31].



### GTX34700 IHC-P Image

IHC-P analysis of human colon carcinoma tissue using GTX34700 EpCAM antibody [MOC-31].



For full product information, images and publications, please visit our [website](https://www.genetex.com).