

Estrogen Receptor beta antibody [ERb455]

Cat. No. GTX34711

Host	Mouse
Clonality	Monoclonal
Isotype	IgG2a
Applications	WB, ICC/IF, IHC-P, FCM
Reactivity	Human, Mouse, Rat, Sheep, Pig, Monkey, Horse

Package
100 µg

Applications

Application Note

*Optimal dilutions/concentrations should be determined by the researcher.

Suggested dilution	Recommended dilution
WB	1-2µg/ml
ICC/IF	1-2µg/ml
IHC-P	1-2µg/ml for 30 minutes at RT
FCM	1-2µg/10 ⁶ cells

Note : Staining of formalin-fixed tissues requires heating tissue sections in 10mM Tris with 1mM EDTA, pH 9.0, for 45 min at 95°C followed by cooling at RT for 20 minutes.

Not tested in other applications.

Calculated MW 59 kDa. ([Note](#))

Properties

Form	Liquid
Buffer	PBS, 0.05% BSA
Preservative	0.05% Sodium azide
Storage	Store as concentrated solution. Centrifuge briefly prior to opening vial. For short-term storage (1-2 weeks), store at 4°C. For long-term storage, aliquot and store at -20°C or below. Avoid multiple freeze-thaw cycles.
Concentration	0.2 mg/ml (Please refer to the vial label for the specific concentration.)
Immunogen	C-terminus fragment of recombinant human estrogen receptor beta protein
Purification	Protein A/G purified
Conjugation	Unconjugated



For full product information, images and publications, please visit our [website](#).

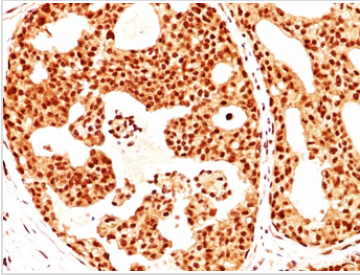
Date 2026 / 01 / 07 Page 1 of 2

For laboratory research use only. Not for any clinical, therapeutic, or diagnostic use in humans or animals. Not for animal or human consumption.

Note

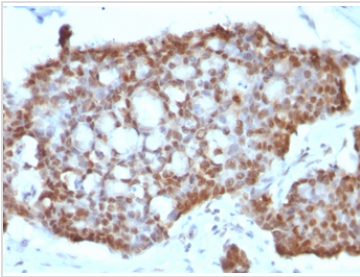
Purchasers shall not, and agree not to enable third parties to, analyze, copy, reverse engineer or otherwise attempt to determine the structure or sequence of the product.

DATA IMAGES



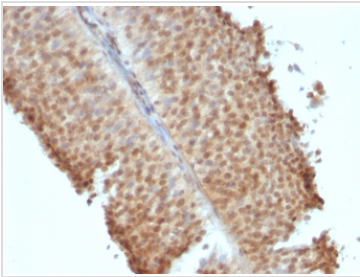
GTX34711 IHC-P Image

IHC-P analysis of human breast carcinoma tissue using GTX34711 Estrogen Receptor beta antibody [ERb455].



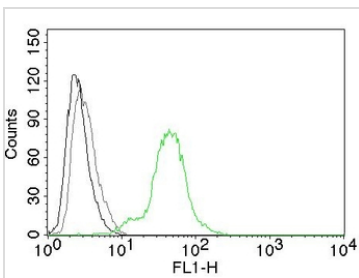
GTX34711 IHC-P Image

IHC-P analysis of human gastric carcinoma tissue using GTX34711 Estrogen Receptor beta antibody [ERb455].



GTX34711 IHC-P Image

IHC-P analysis of human bladder carcinoma tissue using GTX34711 Estrogen Receptor beta antibody [ERb455].



GTX34711 FCM Image

FACS analysis of BT474 cells using GTX34711 Estrogen Receptor beta antibody [ERb455].

Black : Blank

Grey : Isotype Control

Green : Primary antibody



For full product information, images and publications, please visit our [website](#).