

GFAP antibody [GA-5]

Cat. No. GTX34759

| | |
|---------------------|---|
| Host | Mouse |
| Clonality | Monoclonal |
| Isotype | IgG1 |
| Applications | WB, ICC/IF, IHC-P, FCM |
| Reactivity | Human, Mouse, Rat, Rabbit, Bovine, Chicken, Pig |

References (3)

Package

100 µg

Applications

Application Note

*Optimal dilutions/concentrations should be determined by the researcher.

| Suggested dilution | Recommended dilution |
|--------------------|-------------------------------|
| WB | 1-2µg/ml |
| ICC/IF | 1-2µg/ml |
| IHC-P | 1-2µg/ml for 30 minutes at RT |
| FCM | 1-2µg/10 ⁶ cells |

Note : Staining of formalin-fixed tissues requires heating tissue sections in 10mM Tris with 1mM EDTA, pH 9.0, for 45 min at 95°C followed by cooling at RT for 20 minutes.

Not tested in other applications.

Product Note

This MAb recognizes a protein of ~50kDa which is identified as Glial Fibrillary Acidic Protein (GFAP). It shows no cross-reaction with other intermediate filament proteins.

Properties

| | |
|----------------------|--|
| Form | Liquid |
| Buffer | PBS, 0.05% BSA |
| Preservative | 0.05% Sodium azide |
| Storage | Store as concentrated solution. Centrifuge briefly prior to opening vial. For short-term storage (1-2 weeks), store at 4°C. For long-term storage, aliquot and store at -20°C or below. Avoid multiple freeze-thaw cycles. |
| Concentration | 0.2 mg/ml (Please refer to the vial label for the specific concentration.) |
| Immunogen | GFAP isolated from pig spinal cord |
| Purification | Protein A/G purified |
| Conjugation | Unconjugated |



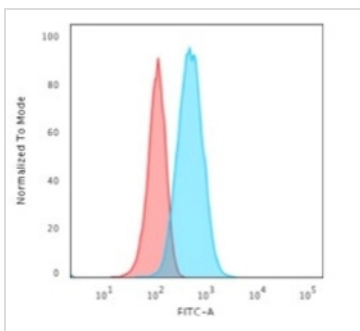
For full product information, images and publications, please visit our [website](#).

For laboratory research use only. Not for any clinical, therapeutic, or diagnostic use in humans or animals. Not for animal or human consumption.

Note

Purchasers shall not, and agree not to enable third parties to, analyze, copy, reverse engineer or otherwise attempt to determine the structure or sequence of the product.

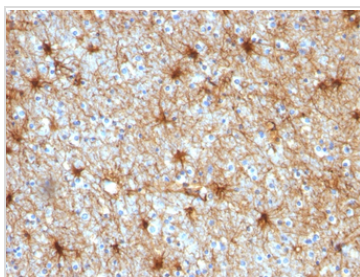
DATA IMAGES

**GTX34759 FCM Image**

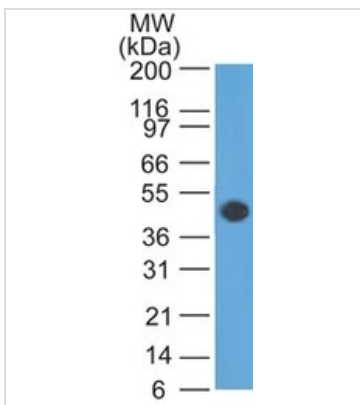
FACS analysis of T98G cells using GTX34759 GFAP antibody [GA-5].

Blue : Primary antibody

Red : Isotype control

**GTX34759 IHC-P Image**

IHC-P analysis of human cerebellum tissue using GTX34759 GFAP antibody [GA-5].

**GTX34759 WB Image**

WB analysis of human brain tissue lysate using GTX34759 GFAP antibody [GA-5].



For full product information, images and publications, please visit our [website](#).