

## Glypican-3 antibody [SPM595]

Cat. No. GTX34762

Host	Mouse
Clonality	Monoclonal
Isotype	IgG1
Applications	ICC/IF, IHC-P, FCM
Reactivity	Human

Package  
100 µg

## Applications

## Application Note

\*Optimal dilutions/concentrations should be determined by the researcher.

Suggested dilution	Recommended dilution
ICC/IF	1-2µg/ml
IHC-P	1-2µg/ml for 30 minutes at RT
FCM	1-2µg/10 <sup>6</sup> cells

**Note : Staining of formalin-fixed tissues requires heating tissue sections in 10mM Tris with 1mM EDTA, pH 9.0, for 45 min at 95°C followed by cooling at RT for 20 minutes.**

Not tested in other applications.

## Properties

Form	Liquid
Buffer	PBS, 0.05% BSA
Preservative	0.05% Sodium azide
Storage	Store as concentrated solution. Centrifuge briefly prior to opening vial. For short-term storage (1-2 weeks), store at 4°C. For long-term storage, aliquot and store at -20°C or below. Avoid multiple freeze-thaw cycles.
Concentration	0.2 mg/ml (Please refer to the vial label for the specific concentration.)
Immunogen	A recombinant fragment containing amino acids 511-580 of human glypican-3
Purification	Protein A/G purified
Conjugation	Unconjugated

## Note

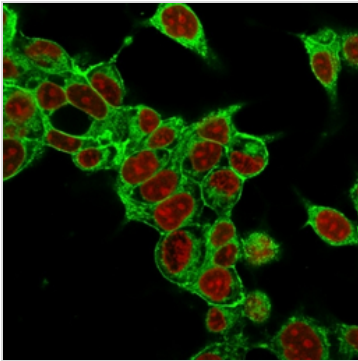
For laboratory research use only. Not for any clinical, therapeutic, or diagnostic use in humans or animals. Not for animal or human consumption.

Purchasers shall not, and agree not to enable third parties to, analyze, copy, reverse engineer or otherwise attempt to determine the structure or sequence of the product.



For full product information, images and publications, please visit our [website](#).

## DATA IMAGES

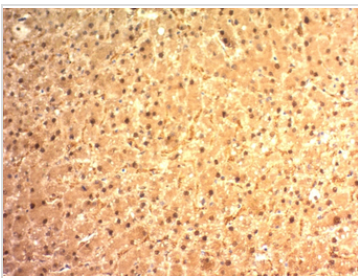


### GTX34762 ICC/IF Image

ICC/IF analysis of MeOH-fixed HepG2 cells using GTX34762 Glypican-3 antibody [SPM595].

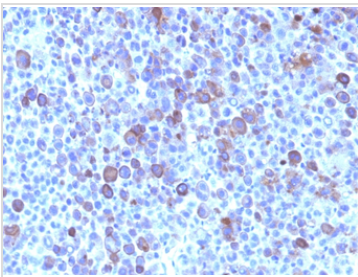
Green : Primary antibody

Red : nucleus



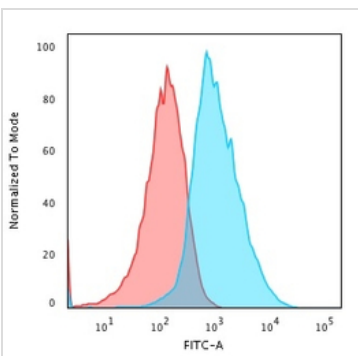
### GTX34762 IHC-P Image

IHC-P analysis of human hepatocellular carcinoma tissue using GTX34762 Glypican-3 antibody [SPM595].



### GTX34762 IHC-P Image

IHC-P analysis of human hepatocellular carcinoma tissue using GTX34762 Glypican-3 antibody [SPM595].



### GTX34762 FCM Image

FACS analysis of PFA-fixed HepG2 cells using GTX34762 Glypican-3 antibody [SPM595].

Blue : Primary antibody

Red : Isotype control



For full product information, images and publications, please visit our [website](https://www.genetex.com).