

GRP94 antibody [SPM249]

Cat. No. GTX34772

Host	Rat
Clonality	Monoclonal
Isotype	IgG2a
Application	WB, ICC/IF, IHC-P, FACS
Reactivity	Human, Mouse, Rat, Rabbit, Sheep, Bovine, Dog, Hamster, Chicken, Guinea pig, Pig, Monkey, Xenopus laevis, Horse

Package
100 µg

APPLICATION

Application Note

*Optimal dilutions/concentrations should be determined by the researcher.

Suggested dilution	Recommended dilution
WB	1-2µg/ml
ICC/IF	1-2µg/ml
IHC-P	1-2µg/ml for 30 minutes at RT
FACS	1-2µg/10 ⁶ cells

Note : Staining of formalin-fixed tissues requires heating tissue sections in 10mM Tris with 1mM EDTA, pH 9.0, for 45 min at 95°C followed by cooling at RT for 20 minutes.

Not tested in other applications.

Calculated MW	92 kDa. (Note)
Product Note	This MAb is highly specific to grp94 and shows minimal cross-reaction with other members of the HSP90 family.

PROPERTIES

Form	Liquid
Buffer	PBS, 0.05% BSA
Preservative	0.05% Sodium azide
Storage	Store as concentrated solution. Centrifuge briefly prior to opening vial. For short-term storage (1-2 weeks), store at 4°C. For long-term storage, aliquot and store at -20°C or below. Avoid multiple freeze-thaw cycles.
Concentration	0.2 mg/ml (Please refer to the vial label for the specific concentration.)
Immunogen	Purified glucose regulated protein 94 (grp94) from chicken oviducts
Purification	Protein A/G purified
Conjugation	Unconjugated

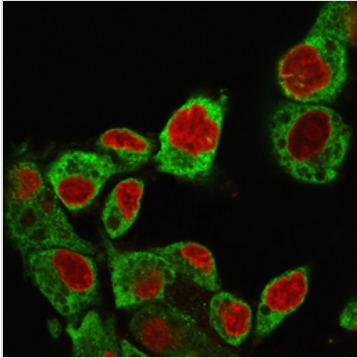


For full product information, images and publications, please visit our [website](#).

For laboratory research use only. Not for any clinical, therapeutic, or diagnostic use in humans or animals. Not for animal or human consumption.

Note

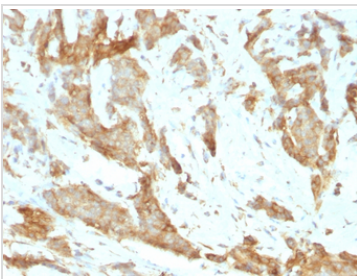
Purchasers shall not, and agree not to enable third parties to, analyze, copy, reverse engineer or otherwise attempt to determine the structure or sequence of the product.

DATA IMAGES

GTX34772 ICC/IF Image

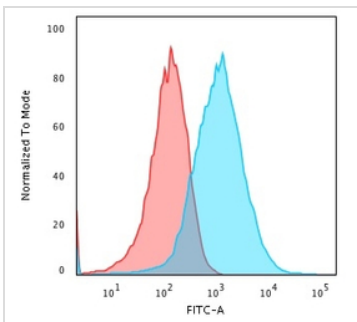
ICC/IF analysis of HepG2 cells using GTX34772 GRP94 antibody [SPM249].

Green : Primary antibody

Red : nucleus


GTX34772 IHC-P Image

IHC-P analysis of human breast carcinoma tissue using GTX34772 GRP94 antibody [SPM249].


GTX34772 FACS Image

FACS analysis of PFA-fixed HepG2 cells using GTX34772 GRP94 antibody [SPM249].

Blue : Primary antibody

Red : Isotype control



For full product information, images and publications, please visit our [website](https://www.genetex.com).