

Her2 / ErbB2 antibody [ERB2/776]

Cat. No. GTX34781

Host	Mouse
Clonality	Monoclonal
Isotype	IgG1
Application	ICC/IF, FACS, ELISA
Reactivity	Human

Package
100 µg

APPLICATION

Application Note

*Optimal dilutions/concentrations should be determined by the researcher.

Suggested dilution	Recommended dilution
ICC/IF	1-2µg/ml
FACS	1-2µg/10 ⁶ cells
ELISA	Assay dependent

Note : For ELISA coating, recommend using BSA-free format (please contact us for PBS only format).

Not tested in other applications.

Calculated MW	138 kDa. (Note)
Product Note	This MAb is specific to c-erbB-2/HER-2 and shows minimal cross-reaction with other members of the family.

PROPERTIES

Form	Liquid
Buffer	10mM PBS, 0.05% BSA
Preservative	0.05% Sodium azide
Storage	Store as concentrated solution. Centrifuge briefly prior to opening vial. For short-term storage (1-2 weeks), store at 4°C. For long-term storage, aliquot and store at -20°C or below. Avoid multiple freeze-thaw cycles.
Concentration	0.2 mg/ml (Please refer to the vial label for the specific concentration.)
Immunogen	Recombinant intracellular domain of human HER-2 protein
Purification	Protein A/G purified
Conjugation	Unconjugated

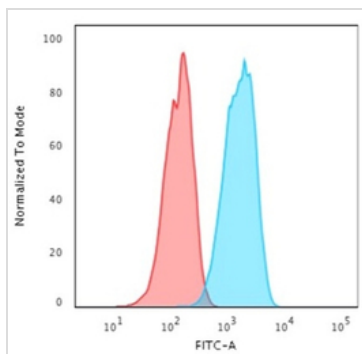


For full product information, images and publications, please visit our [website](#).

For laboratory research use only. Not for any clinical, therapeutic, or diagnostic use in humans or animals. Not for animal or human consumption.

Note

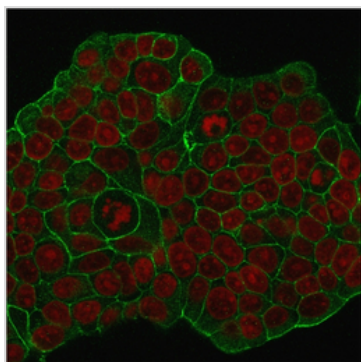
Purchasers shall not, and agree not to enable third parties to, analyze, copy, reverse engineer or otherwise attempt to determine the structure or sequence of the product.

DATA IMAGES

GTX34781 FACS Image

FACS analysis of trypsinized MCF-7 cells using GTX34781 Her2 / ErbB2 antibody [ERB2/776].

Blue : Primary antibody

Red : Isotype control


GTX34781 ICC/IF Image

ICC/IF analysis of MCF-7 cells using GTX34781 Her2 / ErbB2 antibody [ERB2/776].

Green : Primary antibody

Red : nucleus



For full product information, images and publications, please visit our [website](#).