

## HSP27 antibody [HSPB1/774]

Cat. No. GTX34783

Host	Mouse
Clonality	Monoclonal
Isotype	IgG1
Applications	WB, ICC/IF, IHC-P, FCM
Reactivity	Human, Mouse, Rat, Sheep, Chicken, Chimpanzee

Package  
100 µg

## Applications

## Application Note

\*Optimal dilutions/concentrations should be determined by the researcher.

Suggested dilution	Recommended dilution
WB	0.25-0.5µg/ml
ICC/IF	1-2µg/ml
IHC-P	1-2µg/ml for 30 minutes at RT
FCM	1-2µg/10 <sup>6</sup> cells

**Note : Staining of formalin-fixed tissues requires heating tissue sections in 10mM Tris with 1mM EDTA, pH 9.0, for 45 min at 95°C followed by cooling at RT for 20 minutes.**

Not tested in other applications.

Calculated MW 23 kDa. ( [Note](#) )

## Properties

Form	Liquid
Buffer	PBS, 0.05% BSA
Preservative	0.05% Sodium azide
Storage	Store as concentrated solution. Centrifuge briefly prior to opening vial. For short-term storage (1-2 weeks), store at 4°C. For long-term storage, aliquot and store at -20°C or below. Avoid multiple freeze-thaw cycles.
Concentration	0.2 mg/ml (Please refer to the vial label for the specific concentration.)
Immunogen	Recombinant human HSPB1 protein
Purification	Protein A/G purified
Conjugation	Unconjugated



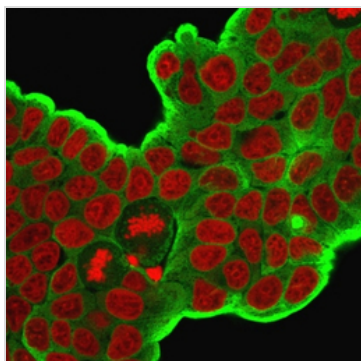
For full product information, images and publications, please visit our [website](#).

For laboratory research use only. Not for any clinical, therapeutic, or diagnostic use in humans or animals. Not for animal or human consumption.

## Note

Purchasers shall not, and agree not to enable third parties to, analyze, copy, reverse engineer or otherwise attempt to determine the structure or sequence of the product.

## DATA IMAGES

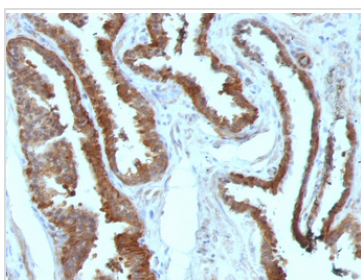


### GTX34783 ICC/IF Image

ICC/IF analysis of PFA-fixed MCF-7 cells using GTX34783 HSP27 antibody [HSPB1/774].

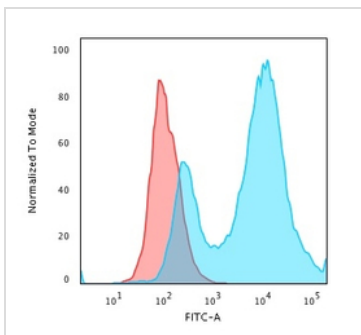
Green : Primary antibody

Red : nucleus



### GTX34783 IHC-P Image

IHC-P analysis of human prostate carcinoma tissue using GTX34783 HSP27 antibody [HSPB1/774].

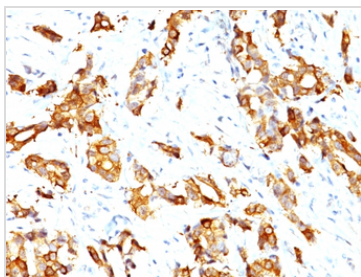


### GTX34783 FCM Image

FACS analysis of PFA-fixed MCF-7 cells using GTX34783 HSP27 antibody [HSPB1/774].

Blue : Primary antibody

Red : Isotype control



### GTX34783 IHC-P Image

IHC-P analysis of human breast carcinoma tissue using GTX34783 HSP27 antibody [HSPB1/774].



For full product information, images and publications, please visit our [website](https://www.genetex.com).