

HSP60 antibody [LK1]

Cat. No. GTX34785

Host	Mouse
Clonality	Monoclonal
Isotype	IgG1
Application	WB, ICC/IF, IHC-P, FACS
Reactivity	Human, Mouse, Rat, Rabbit, Sheep, Drosophila, Bovine, Dog, Hamster, Chicken, Pig, Monkey, Xenopus laevis

Package
100 µg

APPLICATION

Application Note

*Optimal dilutions/concentrations should be determined by the researcher.

Suggested dilution	Recommended dilution
WB	0.25-0.5µg/ml
ICC/IF	1-2µg/ml
IHC-P	1-2µg/ml for 30 minutes at RT
FACS	1-2µg/10 ⁶ cells

Note : Staining of formalin-fixed tissues requires heating tissue sections in 10mM Tris with 1mM EDTA, pH 9.0, for 45 min at 95°C followed by cooling at RT for 20 minutes.

Not tested in other applications.

Calculated MW	61 kDa. (Note)
Product Note	Epitope is localized between aa 383-447 of human hsp60. We do not recommend use of this product for Spinach,Bacteria,Helminths samples.

PROPERTIES

Form	Liquid
Buffer	PBS, 0.05% BSA
Preservative	0.05% Sodium azide
Storage	Store as concentrated solution. Centrifuge briefly prior to opening vial. Store at 4°C.
Concentration	0.2 mg/ml (Please refer to the vial label for the specific concentration.)
Immunogen	Recombinant human HSP60 protein
Purification	Protein A/G purified
Conjugation	Unconjugated

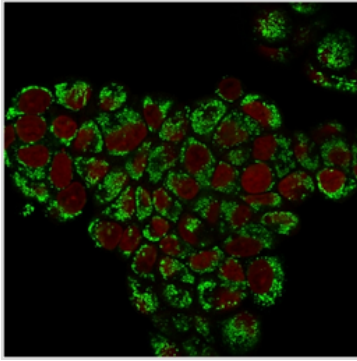


For full product information, images and publications, please visit our [website](#).

For laboratory research use only. Not for any clinical, therapeutic, or diagnostic use in humans or animals. Not for animal or human consumption.

Note

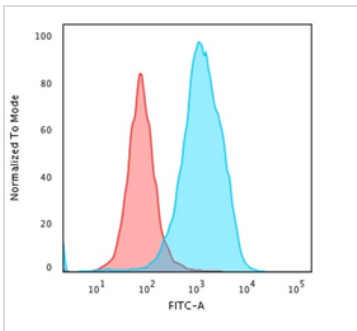
Purchasers shall not, and agree not to enable third parties to, analyze, copy, reverse engineer or otherwise attempt to determine the structure or sequence of the product.

DATA IMAGES

GTX34785 ICC/IF Image

ICC/IF analysis of PFA-fixed MCF-7 cells using GTX34785 HSP60 antibody [LK1].

Green : Primary antibody

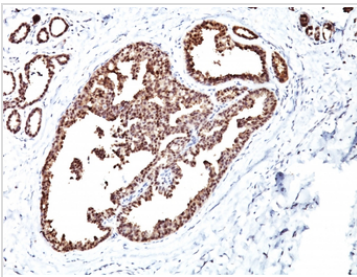
Red : nucleus


GTX34785 FACS Image

FACS analysis of paraformaldehyde-fixed HeLa cells using GTX34785 HSP60 antibody [LK1].

Blue : Primary antibody

Red : Isotype control


GTX34785 IHC-P Image

IHC-P analysis of human breast carcinoma tissue using GTX34785 HSP60 antibody [LK1].



For full product information, images and publications, please visit our [website](https://www.genetex.com).