

## HSP60 antibody [SPM253]

Cat. No. GTX34786

<b>Host</b>	Mouse
<b>Clonality</b>	Monoclonal
<b>Isotype</b>	IgG1
<b>Applications</b>	WB, ICC/IF, IHC-P, FCM
<b>Reactivity</b>	Human, Mouse, Rat, Rabbit, Sheep, Drosophila, Bovine, Dog, Hamster, Chicken, Pig, Monkey, Xenopus laevis

Package  
100 µg

## Applications

## Application Note

\*Optimal dilutions/concentrations should be determined by the researcher.

Suggested dilution	Recommended dilution
WB	1-2µg/ml
ICC/IF	1-2µg/ml
IHC-P	1-2µg/ml for 30 minutes at RT
FCM	1-2µg/10 <sup>6</sup> cells

**Note : Staining of formalin-fixed tissues requires heating tissue sections in 10mM Tris with 1mM EDTA, pH 9.0, for 45 min at 95°C followed by cooling at RT for 20 minutes.**

Not tested in other applications.

**Calculated MW** 61 kDa. ([Note](#))

**Product Note** Epitope is localized between aa 383-447 of human hsp60.  
We do not recommend use of this product for Spinach,Bacteria,Helminths samples.

## Properties

<b>Form</b>	Liquid
<b>Buffer</b>	PBS, 0.05% BSA
<b>Preservative</b>	0.05% Sodium azide
<b>Storage</b>	Store as concentrated solution. Centrifuge briefly prior to opening vial. Store at 4°C.
<b>Concentration</b>	0.2 mg/ml (Please refer to the vial label for the specific concentration.)
<b>Immunogen</b>	Recombinant human HSP60 protein
<b>Purification</b>	Protein A/G purified
<b>Conjugation</b>	Unconjugated



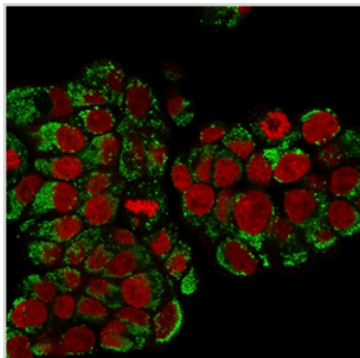
For full product information, images and publications, please visit our [website](#).

For laboratory research use only. Not for any clinical, therapeutic, or diagnostic use in humans or animals. Not for animal or human consumption.

**Note**

Purchasers shall not, and agree not to enable third parties to, analyze, copy, reverse engineer or otherwise attempt to determine the structure or sequence of the product.

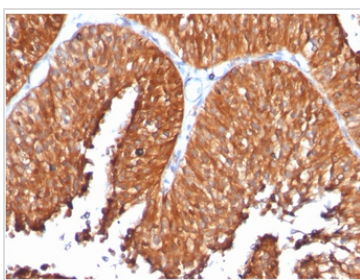
## DATA IMAGES

**GTX34786 ICC/IF Image**

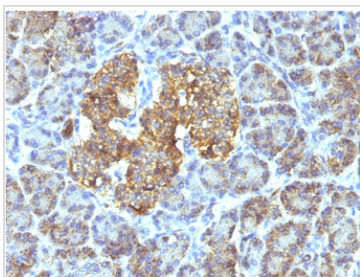
ICC/IF analysis of PFA-fixed MCF-7 cells using GTX34786 HSP60 antibody [SPM253].

Green : Primary antibody

Red : nucleus

**GTX34786 IHC-P Image**

IHC-P analysis of human bladder carcinoma tissue using GTX34786 HSP60 antibody [SPM253].

**GTX34786 IHC-P Image**

IHC-P analysis of human pancreas tissue using GTX34786 HSP60 antibody [SPM253].



For full product information, images and publications, please visit our [website](#).