

## HSP60 antibody [GROEL/730]

Cat. No. GTX34787

Host	Mouse
Clonality	Monoclonal
Isotype	IgG1
Applications	WB, ICC/IF, IHC-P, FCM
Reactivity	Human

References ( 1 )

Package

100 µg

## Applications

## Application Note

\*Optimal dilutions/concentrations should be determined by the researcher.

Suggested dilution	Recommended dilution
WB	Assay dependent
ICC/IF	1-2µg/ml
IHC-P	1-2µg/ml for 30 minutes at RT
FCM	1-2µg/10 <sup>6</sup> cells

**Note : Staining of formalin-fixed tissues is enhanced by heating tissue sections in 1mM EDTA buffer, pH 8.5-9.5, for 45 min at 95°C followed by cooling at RT for 20 minutes.**

Not tested in other applications.

**Calculated MW** 61 kDa. ( [Note](#) )

## Product Note

Clone GROEL730 reacts only with human and is useful in distinguishing human hsp60 from other mammalian and bacterial hsp60.  
We do not recommend use of this product for Mouse,Rat samples.

## Properties

Form	Liquid
Buffer	PBS, 0.05% BSA
Preservative	0.05% Sodium azide
Storage	Store as concentrated solution. Centrifuge briefly prior to opening vial. Store at 4°C.
Concentration	0.2 mg/ml (Please refer to the vial label for the specific concentration.)
Immunogen	Recombinant human HSP60 protein
Purification	Protein A/G purified
Conjugation	Unconjugated



For full product information, images and publications, please visit our [website](#).

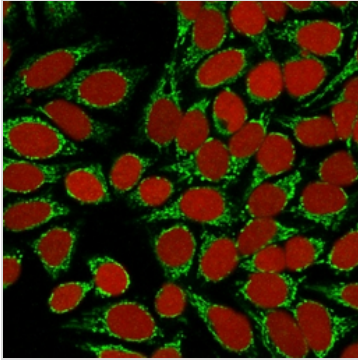
Date 2025 / 04 / 25 Page 1 of 2

For laboratory research use only. Not for any clinical, therapeutic, or diagnostic use in humans or animals. Not for animal or human consumption.

**Note**

Purchasers shall not, and agree not to enable third parties to, analyze, copy, reverse engineer or otherwise attempt to determine the structure or sequence of the product.

## DATA IMAGES

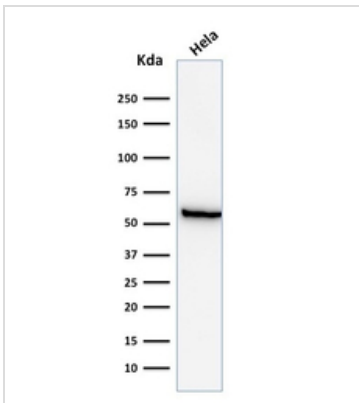


### GTX34787 ICC/IF Image

ICC/IF analysis of HeLa cells using GTX34787 HSP60 antibody [GROEL/730].

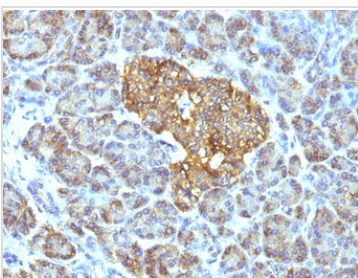
Green : Primary antibody

Red : nucleus



### GTX34787 WB Image

WB analysis of HeLa cell lysate using GTX34787 HSP60 antibody [GROEL/730].



### GTX34787 IHC-P Image

IHC-P analysis of human pancreas tissue using GTX34787 HSP60 antibody [GROEL/730].



For full product information, images and publications, please visit our [website](#).